



SPORTSFIELD SPECIALTIES

EXCELLENCE FROM DESIGN TO INSTALLATION

TRACK & FIELD CATALOG

www.sportsfield.com | 888-975-3343





Welcome to Sportsfield Specialties, Inc.

Since 1998, Sportsfield Specialties, Inc. has been the innovative leader in the manufacture and sale of athletic field equipment for high school, college, and professional levels of competition. With over 30 patents awarded for their game-changing designs, Sportsfield is integral to moving the sports construction and venue renovation industries forward. Our commitment to client-centered service, strategic partnerships, and building world-class equipment gives customers the highest level of confidence that their facility will look great and function efficiently using Sportsfield equipment

Sportsfield's motto is Excellence from Design to Installation and from first contact, our sales team is ready to help you select the best solutions for your unique facility. At Sportsfield, our in-house engineers are integral to finding custom solutions that address regional elements such as wind load and soil conditions. We don't stop there! We're also committed to certified excellence and work with 3rd party testing agencies to ensure products like our Ultra Cross® Knotless Baseball Netting Systems and Zone® Outdoor Wall Pads function at the top of their game.



JumpForm® Long / Triple Jump Sand Pit Forming Systems



Product Overview

- Sportsfield is the inventor and industry-leading provider of sand pit forming systems
- NEW! 1/4" recessed aluminum cover set designed specifically to reduce weight!
- Stay-in-place forming systems simplify installation and eliminate complex hand-forming
- All systems feature bolt-together aluminum construction with gusset reinforcement
- Prefabricated ninety-degree corner sections ensure accuracy and squareness
- Sand catcher models include exclusive integral drainage feature
- Forty-five degree beveled cover ledge design improves athlete safety
- Standard aluminum cover sets contain sand, prevent contamination, and improve safety
- Aluminum covers are recessed to accept synthetic track surfacing material
- U.S. patents #7,641,593; #8,186,125; #8,745,955

Item Number	Product Description
SPHSCVR	JumpForm® H.S. sand pit forming system with cover ledges - 3M x 7M
SPSCHS	JumpForm® H.S. sand pit forming system with sand catchers - 3M x 7M
SPCLHSDR	Dual JumpForm® H.S. sand pit forming system with cover ledges - 3M x 7M
SPSCHSDR	Dual JumpForm® H.S. sand pit forming system with sand catchers - 3M x 7M
SPHSCVR	JumpForm® H.S. sand pit aluminum cover set - 1/2" recess
SPHSCVRQ	JumpForm® H.S. sand pit aluminum cover set - 1/4" recess
SPCLCOL	JumpForm® college / World Athletics sand pit forming system with cover ledges - 3M x 9M
SPSCCOL	JumpForm® college / World Athletics sand pit forming system with sand catchers - 3M x 9M
SPCLCOLDR	Dual JumpForm® college / World Athletics sand pit forming system with cover ledges - 3M x 9M
SPSCCOLDR	Dual JumpForm® college / World Athletics sand pit forming system with sand catchers - 3M x 9M
SPCOLCVR	JumpForm® college / World Athletics sand pit aluminum cover set - 1/2" recess
SPCOLCVRQ	JumpForm® college / World Athletics sand pit aluminum cover set - 1/4" recess

Excellence from Design to Installation



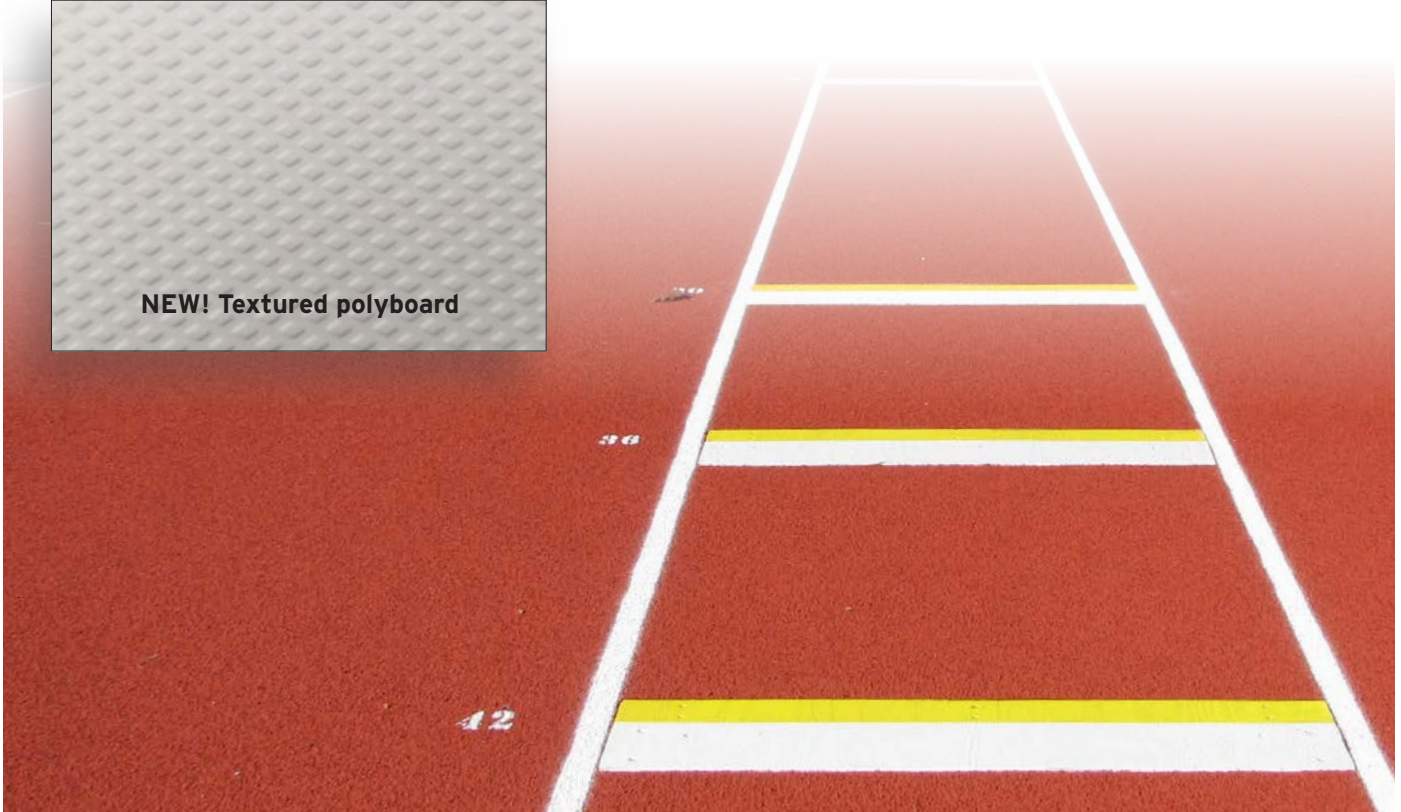


Long / Triple Jump Take-Off Boards

Product Overview

- NEW textured polyboard combines enhanced traction with maximum durability
- Patented slide-on design eliminates exposed hardware from the jumping surface
- Synthetic polyboard material is guaranteed not to warp, splinter, or crack
- Integral 1" PVC drainage stub ensures positive drainage connection
- Choose between reversible insert or seasonal blanking lid systems
- 8", 12" and 16" models accommodate all levels of competition
- Traditional wooden board designs available upon request
- U.S. patent # 8,337,318

Item Number	Product Description
LTJTOB8	Long / triple jump polyboard take-off board - 8"W
LTJTOB8BL	Long / triple jump polyboard take-off board with blanking lid - 8"W
LTJTOB12	Long / triple jump polyboard take-off board with foul strip - 12"W
LTJTOB12World Athletics	World Athletics Long / triple jump polyboard take-off board with foul strip and blanking lid - 12"W
LTJTOB16	Long / triple jump polyboard take-off board - 16"W
LTJTOB16BL	Long / triple jump polyboard take-off board with blanking lid - 16"W





Custom Aluminum Sand Pit Covers

Product Overview

- Custom aluminum cover sets for hand-formed concrete sand pits
- Used to prevent debris contamination and to contain sand within the pit
- Creates a safer offseason condition for your track facility
- Designed to rest on an existing ledge or self-support / "hang"
- Available with a recess for synthetic track surfacing or a flush profile
- Manufactured to the specific dimensions provided by the customer

Item Number	Product Description
SPCVR CSTM	Custom aluminum sand pit covers - ledge install, ½" recess
SPCVR CSTMF	Custom aluminum sand pit covers - ledge install, flush profile
SPCVR CSTMH	Custom aluminum sand pit covers - self-support, ½" recess



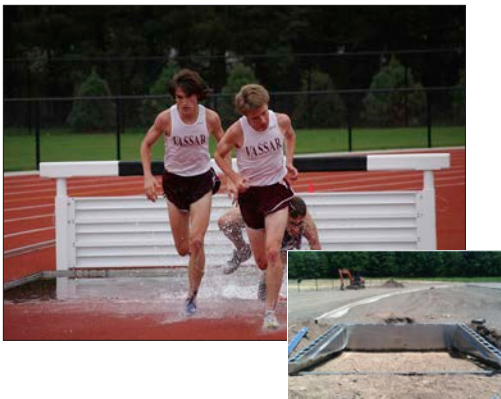
Weighted Mesh & Vinyl Sand Pit Covers

Product Overview

- Constructed with tear/UV resistant mesh and vinyl materials
- Used to prevent debris contamination and to contain sand within the pit
- Integral chain weighted perimeter prevents wind displacement
- Easy handling for high frequency use during track season
- A great seasonal complement to conventional aluminum cover sets
- Choose from a variety of standard color options
- Optional high resolution digitally printed graphics and lettering

Item Number	Product Description
SPCVRM	Weighted single layer mesh cover, 11'-9"W x 25'-6"L
SPCVRMDG	Weighted single layer mesh cover with digital graphics, 11'-9"W x 25'-6"L
SPCVRML	Weighted single layer mesh cover, 11'-9"W x 31'-6"L
SPCVRMLDG	Weighted single layer mesh cover with digital graphics, 11'-9"W x 31'-6"L
SPCVRMCSTM	Custom size weighted single layer mesh cover
SPCVRMCSTMDG	Custom size weighted single layer mesh cover with digital graphics
SPCVRMD	Weighted double layer mesh cover, 11'-9"W x 25'-6"L
SPCVRMDDG	Weighted double layer mesh cover with digital graphics, 11'-9"W x 25'-6"L
SPCVRMDL	Weighted double layer mesh cover, 11'-9"W x 31'-6"L
SPCVRMDLDG	Weighted double layer mesh cover with digital graphics, 11'-9"W x 31'-6"L
SPCVRMDCSTM	Custom size weighted double layer mesh cover
SPCVRMDCSTMDG	Custom size weighted double layer mesh cover with digital graphics
SPCVRV	Weighted solid vinyl cover, 11'-9"W x 25'-6"L
SPCVRVDG	Weighted solid vinyl cover with digital graphics, 11'-9"W x 25'-6"L
SPCVRVL	Weighted solid vinyl cover, 11'-9"W x 31'-6"L
SPCVRVLDG	Weighted solid vinyl cover with digital graphics, 11'-9"W x 31'-6"L
SPCVRVCSTM	Custom size weighted solid vinyl cover
SPCVRVCSTMDG	Custom size weighted solid vinyl cover with digital graphics

Steeplechase Water Jump Pit Forming System & Hurdles



Product Overview

- Sportsfield is the inventor and industry-leading provider of water jump pit forming systems
- Stay-in-place forming systems simplify installation and eliminate complex hand-forming
- Bolt-together aluminum construction with gusset reinforcement and watertight joints
- Prefabricated ninety-degree corner sections ensure accuracy and squareness
- Integrated drainage valve is conveniently opened and closed from ground level
- Modular aluminum cover sets ensure a safe condition when the pit is not in use
- Aluminum covers are recessed to accept synthetic track surfacing material
- Water jump and portable hurdles feature 1/2" synthetic track covered beams
- All components meet / exceed NFHS, NCAA, and World Athletics specifications, rules, & requirements
- Custom cover sets and surface mounted water jump barriers available upon request

Item Number	Product Description
SCWJFS50	Steeplechase water jump pit forming system
SCWJH	Steeplechase water jump pit forming system barrier hurdle
SCWJCVR	Steeplechase water jump pit forming system aluminum cover set
SCHS	Steeplechase portable hurdle set with mobility wheel kit - set of four (4)
SCWJHPL	Steeplechase water jump pit barrier hurdle - base plate mounted to concrete wall
SCWJCVCSTM	Custom steeplechase water jump pit aluminum cover set - ledge install
SCWJCVCSTMH	Custom steeplechase water jump pit aluminum cover set - self-support / "hang"

Excellence from Design to Installation





Pole Vault Landing Pad Systems

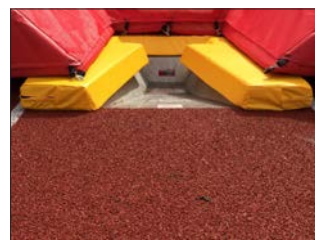
Product Overview

- Premium landing pad systems meet or exceed NFHS, NCAA, and World Athletics standards
- Available with patented DuraZone® integrated closed-cell drainage platform
- DuraZone® prevents water absorption and extends life of the pad
- Includes 2" top pad, vault box safety collar, and 8'x10' coach's box
- Heavy coated vinyl and tear / UV resistant vinyl coated mesh
- Honeycomb polyurethane foam; 8" Velcro® reinforcement between base units
- 10 year warranty on 2" nylon handles, stainless steel hardware, and seams
- All-weather covers, base protector pads, standards and crossbars sold separately
- Available with high resolution digital graphics and lettering
- U.S. Patent #7,753,826

Item Number	Product Description
PV2021L	JumpZone® pole vault landing pad system - 19'-9" x 20'-2" x 26" - NFHS
PV2021LDZ	DuraZone® pole vault landing pad system - 19'-9" x 20'-2" x 26" - NFHS
PV2021LAWC	All-weather cover for pole vault landing pad system - 19'-9" x 20'-2" x 26" - NFHS
PV2021H	JumpZone® pole vault landing pad system - 19'-9" x 20'-2" x 28" - NFHS
PV2021HDZ	DuraZone® pole vault landing pad system - 19'-9" x 20'-2" x 28" - NFHS
PV2021HAWC	All-weather cover for pole vault landing pad system - 19'-9" x 20'-2" x 28" - NFHS
PV2224L	JumpZone® pole vault landing pad system - 21'-6" x 24' x 28" - NFHS / NCAA
PV2224LDZ	DuraZone® pole vault landing pad system - 21'-6" x 24' x 28" - NFHS / NCAA
PV2224LAWC	All-weather cover for pole vault landing pad system - 21'-6" x 24' x 28" - NFHS / NCAA
PV2224H	JumpZone® pole vault landing pad system - 21'-6" x 24' x 32" - NFHS / NCAA
PV2224HDZ	DuraZone® pole vault landing pad system - 21'-6" x 24' x 32" - NFHS / NCAA
PV2224HAWC	All-weather cover for pole vault landing pad system - 21'-6" x 24' x 32" - NFHS / NCAA
PV2227H	JumpZone® pole vault landing pad system - 21'-6" x 27' x 32" - NFHS / NCAA / World Athletics
PV2227HDZ	DuraZone® pole vault landing pad system - 21'-6" x 27' x 32" - NFHS / NCAA / World Athletics
PV2227HAWC	All-weather cover for pole vault landing pad system - 21'-6" x 27' x 32" - NFHS / NCAA / World Athletics
PV2230H	JumpZone® pole vault landing pad system - 21'-6" x 30' x 32" - NFHS / NCAA / World Athletics
PV2230HDZ	DuraZone® pole vault landing pad system - 21'-6" x 30' x 32" - NFHS / NCAA / World Athletics
PV2230HAWC	All-weather cover for pole vault landing pad system - 21'-6" x 30' x 32" - NFHS / NCAA / World Athletics
PVBPREC	Pole vault standard base protector pads, rectangular / center slot (for centered uprights)
PVBPRECN	Pole vault standard base protector pads, rectangular / notched (for offset uprights)
PVBPANG	Pole vault standard base protector pads – angled / center slot (for centered uprights)
PVBPANGN	Pole vault standard base protector pads – angled / notched (for offset uprights)
PVDG	Pole vault landing pad system digitally printed graphics and lettering



Increase Lifespan with DuraZone®





Pole Vault Standards & Forming System

Product Overview

- Winner of American Sports Builders Association (ASBA) Game Changer Award!
- Height adjustable from 5' to 17' or 10' to 21' accommodates NFHS & NCAA competition
- Durable powder coated aluminum and steel construction
- Sliding base with brake creates 32" of horizontal adjustment

NEW! Pole Vault Standard Forming System:

- Provides semi-permanent anchoring to prevent upright tip-over
- Pre-engineered to dictate proper footing requirements and placement
- Recessed design results in resilient synthetic track surfacing finish
- Eliminates exposed concrete surfaces adjacent to landing area
- US Patent #10,604,952, 11,072,902



Item Number	Product Description
PVS0517	5' to 17' Pole vault standards
PVS1021	10' to 21' vault standards
PVSFS	Pole vault standard forming system
PVX	4.5M pole vault crossbar, high visibility fiberglass

Pole Vault Value Packs

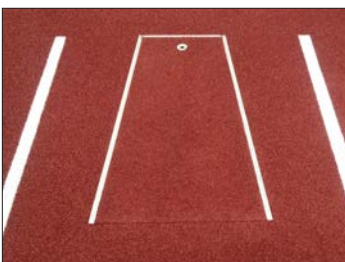
Item Number	Product Description
PVECONVP	Pole vault economy value pack, 19'-9" x 20'-2" x 26" landing pad, cover, standards, base protectors, and (2) crossbars
PVHSVP	Pole vault high school value pack, 19'-9" x 20'-2" x 28" landing pad, cover, standards, base protectors, and (2) crossbars
PVNCAVP	Pole vault collegiate value pack, 21'-6" x 24' x 32" landing pad, cover, standards, base protectors, and (2) crossbars



Pole Vault Boxes & Cover Plugs

Product Overview

- Long-lasting pole vault boxes constructed with stainless steel or cast aluminum
- Available with white, orange, or yellow super durable powder coat finishes
- Designed to meet / exceed NFHS, NCAA, and World Athletics specifications
- Strategic installation wings prevent floating during concrete encasement
- Cast aluminum vault box models are World Athletics certified
- Cover plugs feature a retractable handle and recess to accept track surfacing



Item Number	Product Description
PVBCAW	Cast aluminum pole vault box, white finish
PVBCAY	Cast aluminum pole vault box, yellow finish
PVBCAO	Cast aluminum pole vault box, orange finish
PVBCPCA	Cast aluminum pole vault box cover plug
PVBSS	Stainless steel pole vault box, mill finish
PVBSSW	Stainless steel pole vault box, white finish
PVBSSY	Stainless steel pole vault box, yellow finish
PVBSSO	Stainless steel pole vault box, orange finish
PVBCVRSS	Stainless steel pole vault box cover plug



High Jump Landing Pads

Product Overview

- Premium landing systems meet or exceed NFHS, NCAA, and World Athletics standards
- Available with patented DuraZone® integrated closed-cell drainage platform
- DuraZone® prevents water absorption and extends life of the pad
- Heavy coated vinyl and tear / UV resistant vinyl coated mesh
- Honeycomb polyurethane foam; 8" Velcro® reinforcement between base units
- 10 year warranty on 2" nylon handles, stainless steel hardware, and seams
- All-weather covers, base protector pads, standards and crossbars sold separately
- Available with high resolution digital graphics
- U.S. Patent #7,753,826)



**DuraZone®
Integrated Drainage**

Increase Lifespan with DuraZone®

Item Number	Product Description
HJ168	JumpZone® high jump landing pad system - 16'-6" x 8' x 26" - NFHS
HJ168DZ	DuraZone® high jump landing pad system - 16'-6" x 8' x 26" - NFHS
HJ168AWC	All-weather cover for high jump landing pad system - 16'-6" x 8' x 26" - NFHS
HJ1610	JumpZone® high jump landing pad system - 16'-6" x 10' x 28" - NFHS / NCAA
HJ1610DZ	DuraZone® high jump landing pad system - 16'-6" x 10' x 28" - NFHS / NCAA
HJ1610AWC	All-weather cover for high jump landing pad system - 16'-6" x 10' x 28" - NFHS / NCAA
HJ1810	JumpZone® high jump landing pad system - 18' x 10' x 28" - NFHS / NCAA
HJ1810DZ	DuraZone® high jump landing pad system - 18' x 10' x 28" - NFHS / NCAA
HJ1810AWC	All-weather cover for high jump landing pad system - 18' x 10' x 28" - NFHS / NCAA
HJ2014	JumpZone® high jump landing pad system - 20' x 13'-2" x 28" - NFHS / NCAA / World Athletics
HJ2014DZ	DuraZone® high jump landing pad system - 20' x 13'-2" x 28" - NFHS / NCAA / World Athletics
HJ2014AWC	All-weather cover for high jump landing pad system - 20' x 13'-2" x 28" - NFHS / NCAA / World Athletics
HJ2414	JumpZone® high jump landing pad system - 24'-6" x 13'-2" x 28" - NFHS / NCAA / World Athletics
HJ2414DZ	DuraZone® high jump landing pad system - 24'-6" x 13'-2" x 28" - NFHS / NCAA / World Athletics
HJ2414AWC	All-weather cover for high jump landing pad system - 24'-6" x 13'-2" x 28" - NFHS / NCAA / World Athletics
HJDG	High jump landing system digitally printed graphics and lettering



High Jump Accessories

Item Number	Product Description
HJS0208	2'-8" high jump standards
HJSBP	High jump standard base protector pads
HJX	4M high jump crossbar, high visibility fiberglass

High Jump Value Packs

Item Number	Product Description
HJECONVP	High jump economy value pack, 16'-6" x 8' x 26" landing pad, cover, standards, and crossbar - NFHS
HJHSVP	High jump high school value pack, 16'-6" x 10' x 28" landing pad, cover, standards, and crossbar - NFHS / NCAA
HJNCAAVP	High jump collegiate value pack, 18' x 10' x 28" landing pad, cover, standards, and crossbar - NFHS / NCAA





ThrowForm® Systems

Product Overview

- Sportsfield is the inventor of pre-engineered ThrowForm® systems
- Patented design ensures accurate construction and positive drainage
- Stay-in-place forming system eliminates complex hand-forming
- Features bolt-together sections with integral drainage and throw circle
- Includes staking gussets, rebar notches, and concrete finishing screed line
- Single and dual throwing pad configurations available
- Designed to meet / exceed World Athletics, NCAA, and NFHS rules and regulations
- U.S. Patents #8,186,684 and #8,578,678

Item Number	Product Description
TFD	ThrowForm® discus throw pad forming system
TFDDH	ThrowForm® discus / hammer dual throw pad forming system
TFSP	ThrowForm® shot put / hammer throw pad forming system



Throw Rings & Toe Boards

Product Overview

- Throw rings available in aluminum angle or web-reinforced styles
- All rings include 3/4" recessed concrete finishing screed line
- Conversion rings available to downsize discus circle for shot put / hammer
- Cast aluminum toe board construction with white super durable powder coat
- Designed to meet / exceed World Athletics, NCAA, and NFHS rules and regulations

Item Number	Product Description
TRDAA	Discus throw ring for recessed pad
TRDAW	Web reinforced discus throw ring for recessed pad
TRSPHAA	Shot put / hammer throw ring for recessed pad
TRSPHAW	Web reinforced shot put / hammer throw ring for recessed pad
TRSPHC	Shot put / hammer conversion ring
V362	Hammer conversion ring
SPTBCALHS	High school shot put toe board for level pad
SPTBCARHS	High school shot put toe board for recessed pad
SPTBCARCOL	College / World Athletics shot put toe board for recessed pad





Discus & Shot Put Cages

Product Overview

- High quality discus and shot put cages for all levels of competition
- Black super durable powder coated 4" OD aluminum uprights
- Standard 36" rolled offset mitigates implement ricochet
- Black #36 nylon net with 1-3/4" square mesh, 345 lb. break strength
- Available in multiple heights, styles, and layout configurations
- Hinged net stabilizer extension arms permit grounds maintenance
- Optional back-up net systems available upon request

Item Number	Product Description
SPC	Shot put cage, (4) poles
SPCEA	Shot put cage with extension arms, (4) poles
SPCPT	Portable shot put cage, (4) poles
DCHS	High school discus cage, (6) poles
DCHSEA	High discus cage with extension arms, (6) poles
DCHSPT	High school portable discus cage, (6) poles
DCHS7	High school discus cage, (7) poles
DCHS7EA	High school discus cage with extension arms, (7) poles
DCHS8	High school discus cage, (8) poles
DCHS8EA	High school discus cage with extension arms, (8) poles
DCHSTEA	High school tall discus cage with extension arms, (6) poles
DCCOL	College discus cage, (8) poles
DCCOLEA	College discus cage with extension arms, (8) poles
DCCOLPT	College portable discus cage, (8) poles
DCCOLTEA	College tall discus cage with extension arms, (8) poles
DCWorld AthleticsEA	World Athletics tall discus cage with extension arms, (9) poles



Hammer / Discus Cages

Product Overview

- Premium hammer / discus cages for NCAA & World Athletics competition
- Black super durable powder coated 4" OD steel uprights
- Aluminum swinging gate door with hinged door support post
- Black #84 nylon with 1-3/4 square mesh, 785 lb. break strength
- Standard height, tall, or extra tall models for enhanced safety
- Mitigate ricochet via standard 36" net offset and door cable design
- Single and dual throwing pad configurations available
- Hinged net stabilizer extension arms permit grounds maintenance
- Optional back-up net systems available upon request

Item Number	Product Description
DHCCOL	College hammer / discus cage, 6.15M height for single pad
DHCCOLT	College tall hammer / discus cage, 8M height for single pad
DDHCCOL	College hammer / discus cage, 6.15M height for dual pad
DDHCCOLT	College tall hammer / discus cage, 8M height for dual pad
DDHCCOLXT	College extra tall hammer / discus cage, 9.54M height for dual pad
DHCWorld Athletics	World Athletics hammer / discus cage, 10M height for single pad
DDHCWorld Athletics	World Athletics hammer / discus cage, 10M height for dual pad



Sprint Hurdles

Product Overview

- Available in rocker and "L" shaped styles for all levels
- Hurdles meet or exceed specifications of governing athletic organizations
- Durable, lightweight aluminum construction
- Variety of standard powder coat colors offered
- Available with gateboard lettering and logos
- Proudly manufactured in the U.S.A.
- 5-year manufacturer's product warranty

Item Number	Product Description
HRHS	High school rocker hurdles - 41"
HRHSA	High school advanced rocker hurdle - 41"
HLHS41	High school "L" shaped, fixed counterweights - 41"
HLCOL41	College "L" shaped hurdle, free-sliding counterweights - 41"
HLNAT41	National "L" shaped hurdle, free-sliding counterweights - 41"
HLCOL47	College "L" shaped hurdle, adjustable counterweights - 47"
HLNAT47	National "L" shaped hurdle, adjustable counterweights - 47"

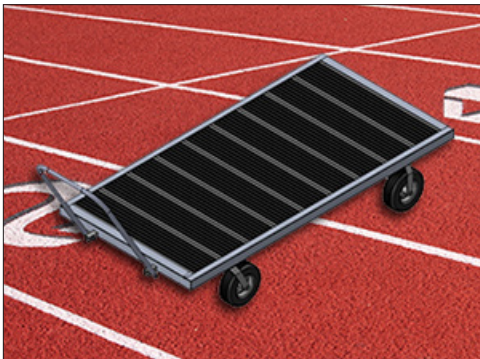


Hurdle Carts & Vinyl Covers

Product Overview

- Durable transport carts hold up to 10 hurdles
- All aluminum construction
- Super durable black powder coated finish
- Universal cart designed for both "L" shaped and rocker hurdles
- Optional all-weather vinyl covers available

Item Number	Product Description
HLCRT41	Transport cart for up to ten 41" "L" shaped hurdles
HLCRT47	Transport cart for up to ten 47" "L" shaped hurdles
HLCRRT	Universal transport cart for up to ten rocker or "L" shaped hurdles
HLCRTAWC41	Optional all-weather vinyl cover for 41" "L" shaped hurdle cart
HLCRTAWC47	Optional all-weather vinyl cover for 47" "L" shaped hurdle cart
HLCRTAWC	Optional universal all-weather vinyl cover for HLCRRT hurdle cart



Multi-Purpose Carts

Product Overview

- Designed for general purpose equipment transport to and from storage
- Ideal for transporting landing systems, hurdles, and related equipment
- Heavy-duty powder coated aluminum construction with textured planks
- Large 12" pneumatic wheels for ease of transport over any surface
- Choose from three standard sizes: 4' x 8', 5' x 10', or 6' x 12'
- Available in a variety of standard powder coat colors

Item Number	Product Description
MC48	Multi-purpose cart - 4'W x 8'W
MC510	Multi-purpose cart - 5'W x 10'W
MC12	Multi-purpose cart - 6'W x 12'W

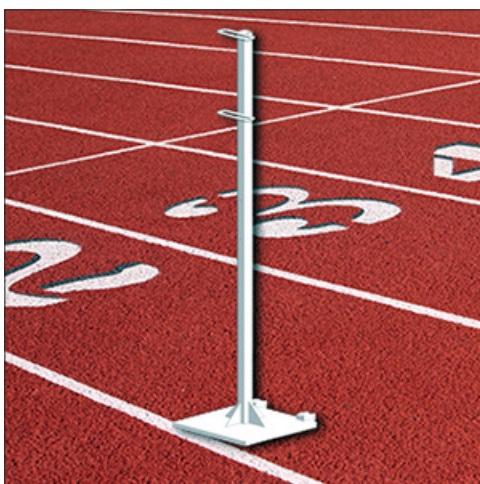


Rotating Lane Gates

Product Overview

- Extend the life of your track surface by distributing use
- Designed to reduce wear of the inside running lanes
- Simply lift and rotate position in ninety degree increments
- Super durable powder coated aluminum construction
- Locking models include provision for tamper resistant padlock

Item Number	Product Description
LGRT	Rotating track lane gates - set of (4)
LGRTL	Locking rotating track lane gates - set of (4)

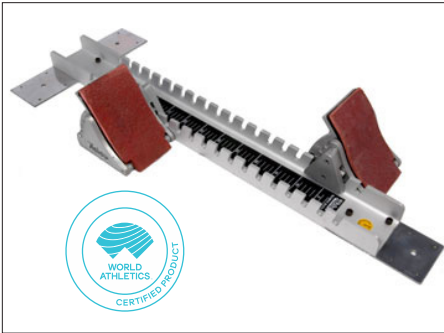


Camera Support Post

Product Overview

- Portable stand for finish line camera mounting
- Includes two multi-media mounting brackets
- 12' height provides elevated vantage point
- Includes 3' x 3' square rollaway base with wheels
- Super durable powder coated aluminum construction

Item Number	Product Description
CSP	Camera support post



Starting Blocks

Product Overview

- Quality starting blocks for all levels of competition
- Aluminum construction with rubber pedal coverings
- Adjustable pedals have four unique angle positions
- Designed to meet NFHS, NCAA, and World Athletics requirements
- Choose between Professional and Elite Scholastic models

Item Number	Product Description
N1132PR	Professional starting block - NCAA / World Athletics
N1131OSC	Elite scholastic starting block - NFHS

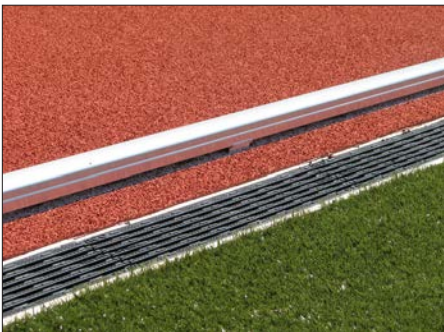


Starting Block Carts

Product Overview

- Holds minimum of ten regulation starting blocks
- Universal design accommodates 26" to 36" block lengths
- Super durable powder coated aluminum construction
- Large 8" dia. rubber wheel casters for ease of transport
- Includes pull handle and swiveling front wheels

Item Number	Product Description
SBC10	Starting block cart - holds (10) min.



Track Curbing

Product Overview

- 2" x 2" aluminum track curbing with rounded corners
- Self-standing design; 20' long interlocking sections
- Form fitted and manufactured to required track layout
- Silver mill, silver anodized, or white powder coated finish
- Elevated 1/2" above surface for unimpeded drainage
- Designed to meet NCAA and World Athletics rules and requirements
- Custom color finishes available upon request

Item Number	Product Description
TCBM	Track curbing with silver aluminum mill finish
TCBA	Track curbing with silver anodized finish
TCBP	Track curbing with white powder coated finish



Track Crossing Mats

Product Overview

- Create a protected crossing area for students and staff
- Reduce track wear from repetitive foot traffic and cleats
- Perimeter weighted black geotextile fabric
- Perimeter edge features vinyl encased chain ballast
- Variety of standard sizes and trim color options

Item Number	Product Description
TCM7530	Weighted track crossing mat - 7'-6"W x 30'L
TCM1530	Weighted track crossing mat - 15"W x 30'L
TCM7540	Weighted track crossing mat - 7'-6"W x 40'L
TCM1540	Weighted track crossing mat - 15"W x 40'L
TCM7550	Weighted track crossing mat - 7'-6"W x 50'L



Roll-Out Track Protectors

Product Overview

- Create a protected crossing area for students and staff
- Reduce track wear from repetitive foot traffic and cleats
- Designed to be rolled and stored when not in use
- Black resilient recycled rubber construction
- Available in a variety of thicknesses, widths and lengths

Item Number	Product Description
RR1236	Roll-out rubber track protector - 12mm x 36"W x variable length
RR1248	Roll-out rubber track protector - 12mm x 48"W x variable length
RR1036	Roll-out rubber track protector - 10mm x 36"W x variable length
RR1048	Roll-out rubber track protector - 10mm x 48"W x variable length



**SPORTSFIELD
SPECIALTIES**
WWW.SPORTSFIELD.COM

41155 State Hwy 10. PO Box 231, Delhi, NY 13753
(888) 975-3343

155 Boyce Dr. Mocksville, NC 27028
(704) 637-2140