



# SPORTSFIELD SPECIALTIES

EXCELLENCE FROM DESIGN TO INSTALLATION

## TRACK & FIELD CATALOG

[www.sportsfield.com](http://www.sportsfield.com) | 888-975-3343





## Welcome to Sportsfield Specialties, Inc.

Since 1998, Sportsfield Specialties, Inc. has been the innovative leader in the manufacture and sale of athletic field equipment for high school, college, and professional levels of competition. With over 30 patents awarded for their game-changing designs, Sportsfield is integral to moving the sports construction and venue renovation industries forward. Our commitment to client-centered service, strategic partnerships, and building world-class equipment gives customers the highest level of confidence that their facility will look great and function efficiently using Sportsfield equipment

Sportsfield's motto is Excellence from Design to Installation and from first contact, our sales team is ready to help you select the best solutions for your unique facility. At Sportsfield, our in-house engineers are integral to finding custom solutions that address regional elements such as wind load and soil conditions. We don't stop there! We're also committed to certified excellence and work with 3rd party testing agencies to ensure products like our Ultra Cross® Knotless Baseball Netting Systems and Zone® Outdoor Wall Pads function at the top of their game.



# JumpForm® Long / Triple Jump Sand Pit Forming Systems



## Product Overview

- Sportsfield is the inventor and industry-leading provider of sand pit forming systems
- NEW! 1/4" recessed aluminum cover set designed specifically to reduce weight!
- Stay-in-place forming systems simplify installation and eliminate complex hand-forming
- All systems feature bolt-together aluminum construction with gusset reinforcement
- Prefabricated ninety-degree corner sections ensure accuracy and squareness
- Sand catcher models include exclusive integral drainage feature
- Forty-five degree beveled cover ledge design improves athlete safety
- Standard aluminum cover sets contain sand, prevent contamination, and improve safety
- Aluminum covers are recessed to accept synthetic track surfacing material
- U.S. patents #7,641,593; #8,186,125; #8,745,955

| Item Number | Product Description   |
|-------------|---|
| SPHSCVR     | JumpForm® H.S. sand pit forming system with cover ledges - 3M x 7M                            |
| SPSCHS      | JumpForm® H.S. sand pit forming system with sand catchers - 3M x 7M                           |
| SPCLHSDR    | Dual JumpForm® H.S. sand pit forming system with cover ledges - 3M x 7M                       |
| SPSCHSDR    | Dual JumpForm® H.S. sand pit forming system with sand catchers - 3M x 7M                      |
| SPHSCVR     | JumpForm® H.S. sand pit aluminum cover set - 1/2" recess                                      |
| SPHSCVRQ    | JumpForm® H.S. sand pit aluminum cover set - 1/4" recess                                      |
| SPCLCOL     | JumpForm® college / World Athletics sand pit forming system with cover ledges - 3M x 9M       |
| SPSCCOL     | JumpForm® college / World Athletics sand pit forming system with sand catchers - 3M x 9M      |
| SPCLCOLDR   | Dual JumpForm® college / World Athletics sand pit forming system with cover ledges - 3M x 9M  |
| SPSCCOLDR   | Dual JumpForm® college / World Athletics sand pit forming system with sand catchers - 3M x 9M |
| SPCOLCVR    | JumpForm® college / World Athletics sand pit aluminum cover set - 1/2" recess                 |
| SPCOLCVRQ   | JumpForm® college / World Athletics sand pit aluminum cover set - 1/4" recess                 |

## Excellence from Design to Installation



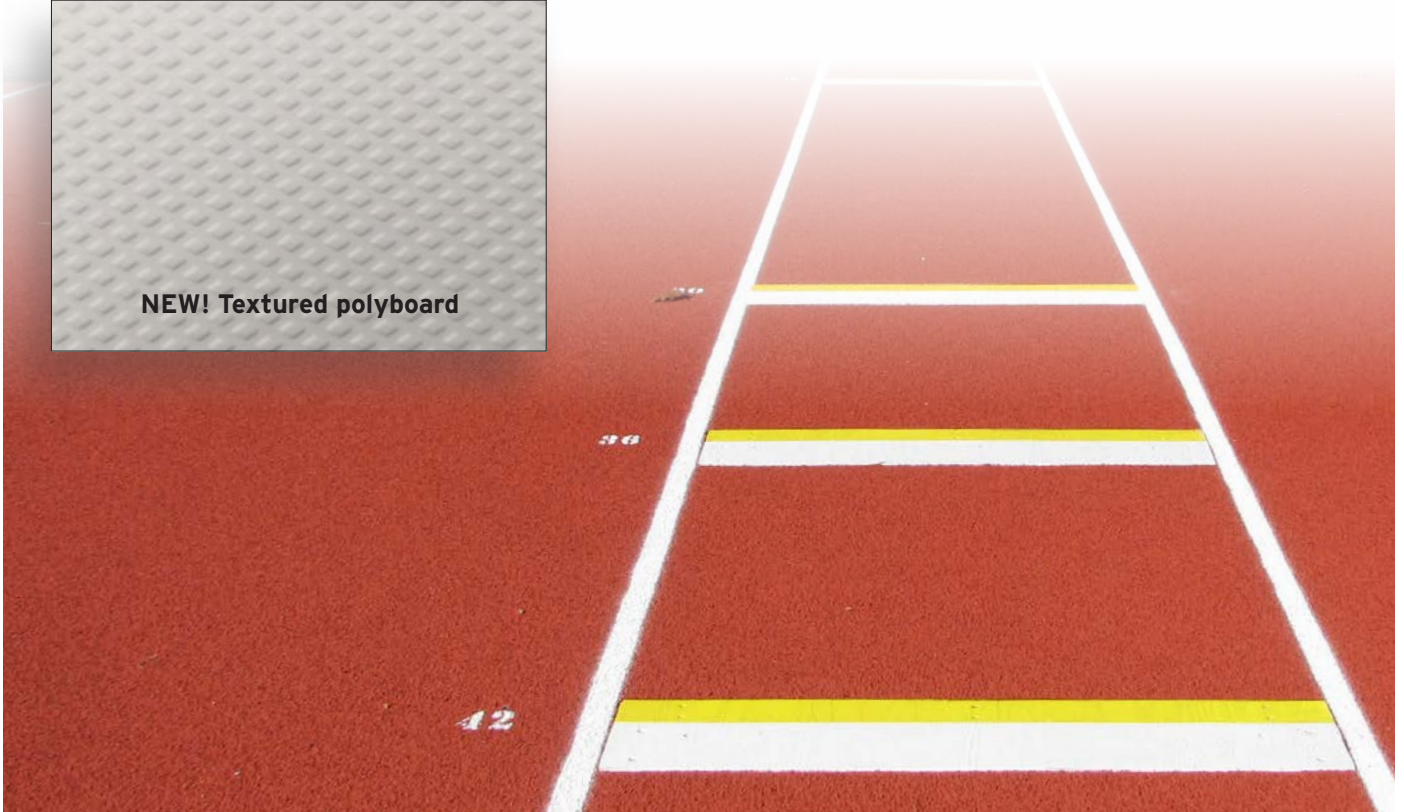


## Long / Triple Jump Take-Off Boards

### Product Overview

- NEW textured polyboard combines enhanced traction with maximum durability
- Patented slide-on design eliminates exposed hardware from the jumping surface
- Synthetic polyboard material is guaranteed not to warp, splinter, or crack
- Integral 1" PVC drainage stub ensures positive drainage connection
- Choose between reversible insert or seasonal blanking lid systems
- 8", 12" and 16" models accommodate all levels of competition
- Traditional wooden board designs available upon request
- U.S. patent # 8,337,318

| Item Number             | Product Description   |
|-------------------------|---|
| LTJTOB8                 | Long / triple jump polyboard take-off board - 8"W   |
| LTJTOB8BL               | Long / triple jump polyboard take-off board with blanking lid - 8"W                                 |
| LTJTOB12                | Long / triple jump polyboard take-off board with foul strip - 12"W                                  |
| LTJTOB12World Athletics | World Athletics Long / triple jump polyboard take-off board with foul strip and blanking lid - 12"W |
| LTJTOB16                | Long / triple jump polyboard take-off board - 16"W  |
| LTJTOB16BL              | Long / triple jump polyboard take-off board with blanking lid - 16"W                                |





## Custom Aluminum Sand Pit Covers

### Product Overview

- Custom aluminum cover sets for hand-formed concrete sand pits
- Used to prevent debris contamination and to contain sand within the pit
- Creates a safer offseason condition for your track facility
- Designed to rest on an existing ledge or self-support / "hang"
- Available with a recess for synthetic track surfacing or a flush profile
- Manufactured to the specific dimensions provided by the customer

| Item Number | Product Description  |
|-------------|--|
| SPCVR CSTM  | Custom aluminum sand pit covers - ledge install, ½" recess     |
| SPCVR CSTMF | Custom aluminum sand pit covers - ledge install, flush profile |
| SPCVR CSTMH | Custom aluminum sand pit covers - self-support, ½" recess      |



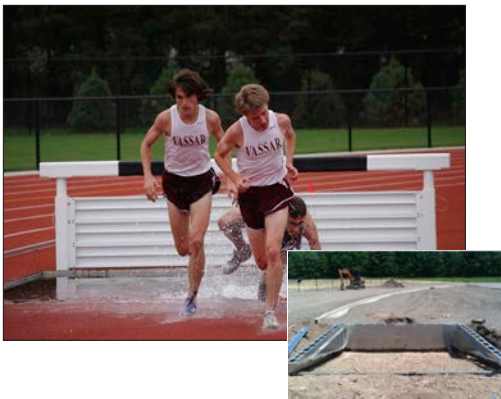
## Weighted Mesh & Vinyl Sand Pit Covers

### Product Overview

- Constructed with tear/UV resistant mesh and vinyl materials
- Used to prevent debris contamination and to contain sand within the pit
- Integral chain weighted perimeter prevents wind displacement
- Easy handling for high frequency use during track season
- A great seasonal complement to conventional aluminum cover sets
- Choose from a variety of standard color options
- Optional high resolution digitally printed graphics and lettering

| Item Number   | Product Description   |
|---------------|---|
| SPCVRM        | Weighted single layer mesh cover, 11'-9"W x 25'-6"L                       |
| SPCVRMDG      | Weighted single layer mesh cover with digital graphics, 11'-9"W x 25'-6"L |
| SPCVRML       | Weighted single layer mesh cover, 11'-9"W x 31'-6"L                       |
| SPCVRMLDG     | Weighted single layer mesh cover with digital graphics, 11'-9"W x 31'-6"L |
| SPCVRMCSTM    | Custom size weighted single layer mesh cover                              |
| SPCVRMCSTMDG  | Custom size weighted single layer mesh cover with digital graphics        |
| SPCVRMD       | Weighted double layer mesh cover, 11'-9"W x 25'-6"L                       |
| SPCVRMDDG     | Weighted double layer mesh cover with digital graphics, 11'-9"W x 25'-6"L |
| SPCVRMDL      | Weighted double layer mesh cover, 11'-9"W x 31'-6"L                       |
| SPCVRMDLDG    | Weighted double layer mesh cover with digital graphics, 11'-9"W x 31'-6"L |
| SPCVRMDCSTM   | Custom size weighted double layer mesh cover                              |
| SPCVRMDCSTMDG | Custom size weighted double layer mesh cover with digital graphics        |
| SPCVRV        | Weighted solid vinyl cover, 11'-9"W x 25'-6"L                             |
| SPCVRVDG      | Weighted solid vinyl cover with digital graphics, 11'-9"W x 25'-6"L       |
| SPCVRVL       | Weighted solid vinyl cover, 11'-9"W x 31'-6"L                             |
| SPCVRVLDG     | Weighted solid vinyl cover with digital graphics, 11'-9"W x 31'-6"L       |
| SPCVRVCSTM    | Custom size weighted solid vinyl cover                                    |
| SPCVRVCSTMDG  | Custom size weighted solid vinyl cover with digital graphics              |

# Steeplechase Water Jump Pit Forming System & Hurdles



## Product Overview

- Sportsfield is the inventor and industry-leading provider of water jump pit forming systems
- Stay-in-place forming systems simplify installation and eliminate complex hand-forming
- Bolt-together aluminum construction with gusset reinforcement and watertight joints
- Prefabricated ninety-degree corner sections ensure accuracy and squareness
- Integrated drainage valve is conveniently opened and closed from ground level
- Modular aluminum cover sets ensure a safe condition when the pit is not in use
- Aluminum covers are recessed to accept synthetic track surfacing material
- Water jump and portable hurdles feature 1/2" synthetic track covered beams
- All components meet / exceed NFHS, NCAA, and World Athletics specifications, rules, & requirements
- Custom cover sets and surface mounted water jump barriers available upon request

| Item Number | Product Description  |
|-------------|--|
| SCWJFS50    | Steeplechase water jump pit forming system                                       |
| SCWJH       | Steeplechase water jump pit forming system barrier hurdle                        |
| SCWJCVR     | Steeplechase water jump pit forming system aluminum cover set                    |
| SCHS        | Steeplechase portable hurdle set with mobility wheel kit - set of four (4)       |
| SCWJHPL     | Steeplechase water jump pit barrier hurdle - base plate mounted to concrete wall |
| SCWJCVCSTM  | Custom steeplechase water jump pit aluminum cover set - ledge install            |
| SCWJCVCSTMH | Custom steeplechase water jump pit aluminum cover set - self-support / "hang"    |

## Excellence from Design to Installation





# Pole Vault Landing Pad Systems

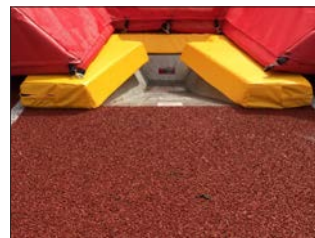
## Product Overview

- Premium landing pad systems meet or exceed NFHS, NCAA, and World Athletics standards
- Available with patented DuraZone® integrated closed-cell drainage platform
- DuraZone® prevents water absorption and extends life of the pad
- Includes 2" top pad, vault box safety collar, and 8'x10' coach's box
- Heavy coated vinyl and tear / UV resistant vinyl coated mesh
- Honeycomb polyurethane foam; 8" Velcro® reinforcement between base units
- 10 year warranty on 2" nylon handles, stainless steel hardware, and seams
- All-weather covers, base protector pads, standards and crossbars sold separately
- Available with high resolution digital graphics and lettering
- U.S. Patent #7,753,826

| Item Number | Product Description  |
|-------------|--|
| PV2021L     | JumpZone® pole vault landing pad system - 19'-9" x 20'-2" x 26" - NFHS                                   |
| PV2021LDZ   | DuraZone® pole vault landing pad system - 19'-9" x 20'-2" x 26" - NFHS                                   |
| PV2021LAWC  | All-weather cover for pole vault landing pad system - 19'-9" x 20'-2" x 26" - NFHS                       |
| PV2021H     | JumpZone® pole vault landing pad system - 19'-9" x 20'-2" x 28" - NFHS                                   |
| PV2021HDZ   | DuraZone® pole vault landing pad system - 19'-9" x 20'-2" x 28" - NFHS                                   |
| PV2021HAWC  | All-weather cover for pole vault landing pad system - 19'-9" x 20'-2" x 28" - NFHS                       |
| PV2224L     | JumpZone® pole vault landing pad system - 21'-6" x 24' x 28" - NFHS / NCAA                               |
| PV2224LDZ   | DuraZone® pole vault landing pad system - 21'-6" x 24' x 28" - NFHS / NCAA                               |
| PV2224LAWC  | All-weather cover for pole vault landing pad system - 21'-6" x 24' x 28" - NFHS / NCAA                   |
| PV2224H     | JumpZone® pole vault landing pad system - 21'-6" x 24' x 32" - NFHS / NCAA                               |
| PV2224HDZ   | DuraZone® pole vault landing pad system - 21'-6" x 24' x 32" - NFHS / NCAA                               |
| PV2224HAWC  | All-weather cover for pole vault landing pad system - 21'-6" x 24' x 32" - NFHS / NCAA                   |
| PV2227H     | JumpZone® pole vault landing pad system - 21'-6" x 27' x 32" - NFHS / NCAA / World Athletics             |
| PV2227HDZ   | DuraZone® pole vault landing pad system - 21'-6" x 27' x 32" - NFHS / NCAA / World Athletics             |
| PV2227HAWC  | All-weather cover for pole vault landing pad system - 21'-6" x 27' x 32" - NFHS / NCAA / World Athletics |
| PV2230H     | JumpZone® pole vault landing pad system - 21'-6" x 30' x 32" - NFHS / NCAA / World Athletics             |
| PV2230HDZ   | DuraZone® pole vault landing pad system - 21'-6" x 30' x 32" - NFHS / NCAA / World Athletics             |
| PV2230HAWC  | All-weather cover for pole vault landing pad system - 21'-6" x 30' x 32" - NFHS / NCAA / World Athletics |
| PVBPREC     | Pole vault standard base protector pads, rectangular / center slot (for centered uprights)               |
| PVBPRECN    | Pole vault standard base protector pads, rectangular / notched (for offset uprights)                     |
| PVBPANG     | Pole vault standard base protector pads – angled / center slot (for centered uprights)                   |
| PVBPANGN    | Pole vault standard base protector pads – angled / notched (for offset uprights)                         |
| PVDG        | Pole vault landing pad system digitally printed graphics and lettering                                   |



Increase Lifespan with DuraZone®





## Pole Vault Standards & Forming System

### Product Overview

- Winner of American Sports Builders Association (ASBA) Game Changer Award!
- Height adjustable from 5' to 17' or 10' to 21' accommodates NFHS & NCAA competition
- Durable powder coated aluminum and steel construction
- Sliding base with brake creates 32" of horizontal adjustment

### NEW! Pole Vault Standard Forming System:

- Provides semi-permanent anchoring to prevent upright tip-over
- Pre-engineered to dictate proper footing requirements and placement
- Recessed design results in resilient synthetic track surfacing finish
- Eliminates exposed concrete surfaces adjacent to landing area
- US Patent #10,604,952, 11,072,902



| Item Number | Product Description                                  |
|-------------|--|
| PVS0517     | 5' to 17' Pole vault standards                       |
| PVS1021     | 10' to 21' vault standards                           |
| PVSFS       | Pole vault standard forming system                   |
| PVX         | 4.5M pole vault crossbar, high visibility fiberglass |

## Pole Vault Value Packs

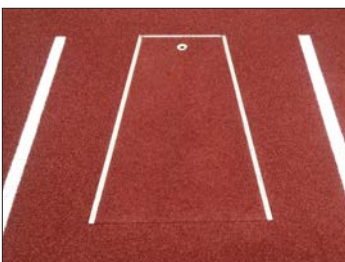
| Item Number | Product Description  |
|-------------|--|
| PVECONVP    | Pole vault economy value pack, 19'-9" x 20'-2" x 26" landing pad, cover, standards, base protectors, and (2) crossbars     |
| PVHSVP      | Pole vault high school value pack, 19'-9" x 20'-2" x 28" landing pad, cover, standards, base protectors, and (2) crossbars |
| PVNCAVP     | Pole vault collegiate value pack, 21'-6" x 24' x 32" landing pad, cover, standards, base protectors, and (2) crossbars     |



## Pole Vault Boxes & Cover Plugs

### Product Overview

- Long-lasting pole vault boxes constructed with stainless steel or cast aluminum
- Available with white, orange, or yellow super durable powder coat finishes
- Designed to meet / exceed NFHS, NCAA, and World Athletics specifications
- Strategic installation wings prevent floating during concrete encasement
- Cast aluminum vault box models are World Athletics certified
- Cover plugs feature a retractable handle and recess to accept track surfacing



| Item Number | Product Description                           |
|-------------|---|
| PVBCAW      | Cast aluminum pole vault box, white finish    |
| PVBCAY      | Cast aluminum pole vault box, yellow finish   |
| PVBCAO      | Cast aluminum pole vault box, orange finish   |
| PVBCPCA     | Cast aluminum pole vault box cover plug       |
| PVBSS       | Stainless steel pole vault box, mill finish   |
| PVBSSW      | Stainless steel pole vault box, white finish  |
| PVBSSY      | Stainless steel pole vault box, yellow finish |
| PVBSSO      | Stainless steel pole vault box, orange finish |
| PVBCVRSS    | Stainless steel pole vault box cover plug     |

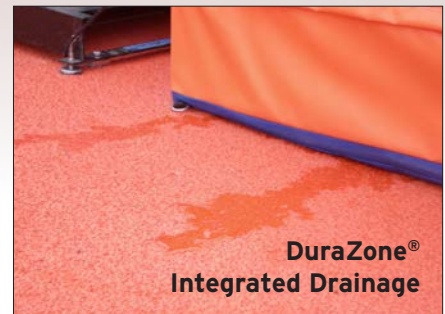




## High Jump Landing Pads

### Product Overview

- Premium landing systems meet or exceed NFHS, NCAA, and World Athletics standards
- Available with patented DuraZone® integrated closed-cell drainage platform
- DuraZone® prevents water absorption and extends life of the pad
- Heavy coated vinyl and tear / UV resistant vinyl coated mesh
- Honeycomb polyurethane foam; 8" Velcro® reinforcement between base units
- 10 year warranty on 2" nylon handles, stainless steel hardware, and seams
- All-weather covers, base protector pads, standards and crossbars sold separately
- Available with high resolution digital graphics
- U.S. Patent #7,753,826)



## Increase Lifespan with DuraZone®

| Item Number | Product Description  |
|-------------|--|
| HJ168       | JumpZone® high jump landing pad system - 16'-6" x 8' x 26" - NFHS  |
| HJ168DZ     | DuraZone® high jump landing pad system - 16'-6" x 8' x 26" - NFHS  |
| HJ168AWC    | All-weather cover for high jump landing pad system - 16'-6" x 8' x 26" - NFHS                              |
| HJ1610      | JumpZone® high jump landing pad system - 16'-6" x 10' x 28" - NFHS / NCAA                                  |
| HJ1610DZ    | DuraZone® high jump landing pad system - 16'-6" x 10' x 28" - NFHS / NCAA                                  |
| HJ1610AWC   | All-weather cover for high jump landing pad system - 16'-6" x 10' x 28" - NFHS / NCAA                      |
| HJ1810      | JumpZone® high jump landing pad system - 18' x 10' x 28" - NFHS / NCAA                                     |
| HJ1810DZ    | DuraZone® high jump landing pad system - 18' x 10' x 28" - NFHS / NCAA                                     |
| HJ1810AWC   | All-weather cover for high jump landing pad system - 18' x 10' x 28" - NFHS / NCAA                         |
| HJ2014      | JumpZone® high jump landing pad system - 20' x 13'-2" x 28" - NFHS / NCAA / World Athletics                |
| HJ2014DZ    | DuraZone® high jump landing pad system - 20' x 13'-2" x 28" - NFHS / NCAA / World Athletics                |
| HJ2014AWC   | All-weather cover for high jump landing pad system - 20' x 13'-2" x 28" - NFHS / NCAA / World Athletics    |
| HJ2414      | JumpZone® high jump landing pad system - 24'-6" x 13'-2" x 28" - NFHS / NCAA / World Athletics             |
| HJ2414DZ    | DuraZone® high jump landing pad system - 24'-6" x 13'-2" x 28" - NFHS / NCAA / World Athletics             |
| HJ2414AWC   | All-weather cover for high jump landing pad system - 24'-6" x 13'-2" x 28" - NFHS / NCAA / World Athletics |
| HJDG        | High jump landing system digitally printed graphics and lettering  |



## High Jump Accessories

| Item Number | Product Description                               |
|-------------|---|
| HJS0208     | 2'-8" high jump standards                         |
| HJSBP       | High jump standard base protector pads            |
| HJX         | 4M high jump crossbar, high visibility fiberglass |

## High Jump Value Packs

| Item Number | Product Description  |
|-------------|--|
| HJECONVP    | High jump economy value pack, 16'-6" x 8' x 26" landing pad, cover, standards, and crossbar - NFHS             |
| HJHSVP      | High jump high school value pack, 16'-6" x 10' x 28" landing pad, cover, standards, and crossbar - NFHS / NCAA |
| HJNCAAVP    | High jump collegiate value pack, 18' x 10' x 28" landing pad, cover, standards, and crossbar - NFHS / NCAA     |





## ThrowForm® Systems

### Product Overview

- Sportsfield is the inventor of pre-engineered ThrowForm® systems
- Patented design ensures accurate construction and positive drainage
- Stay-in-place forming system eliminates complex hand-forming
- Features bolt-together sections with integral drainage and throw circle
- Includes staking gussets, rebar notches, and concrete finishing screed line
- Single and dual throwing pad configurations available
- Designed to meet / exceed World Athletics, NCAA, and NFHS rules and regulations
- U.S. Patents #8,186,684 and #8,578,678

| Item Number | Product Description                                      |
|-------------|--|
| TFD         | ThrowForm® discus throw pad forming system               |
| TFDDH       | ThrowForm® discus / hammer dual throw pad forming system |
| TFSP        | ThrowForm® shot put / hammer throw pad forming system    |



## Throw Rings & Toe Boards

### Product Overview

- Throw rings available in aluminum angle or web-reinforced styles
- All rings include 3/4" recessed concrete finishing screed line
- Conversion rings available to downsize discus circle for shot put / hammer
- Cast aluminum toe board construction with white super durable powder coat
- Designed to meet / exceed World Athletics, NCAA, and NFHS rules and regulations

| Item Number | Product Description   |
|-------------|---|
| TRDAA       | Discus throw ring for recessed pad                            |
| TRDAW       | Web reinforced discus throw ring for recessed pad             |
| TRSPHAA     | Shot put / hammer throw ring for recessed pad                 |
| TRSPHAW     | Web reinforced shot put / hammer throw ring for recessed pad  |
| TRSPHC      | Shot put / hammer conversion ring                             |
| V362        | Hammer conversion ring  |
| SPTBCALHS   | High school shot put toe board for level pad                  |
| SPTBCARHS   | High school shot put toe board for recessed pad               |
| SPTBCARCOL  | College / World Athletics shot put toe board for recessed pad |





## Discus & Shot Put Cages

### Product Overview

- High quality discus and shot put cages for all levels of competition
- Black super durable powder coated 4" OD aluminum uprights
- Standard 36" rolled offset mitigates implement ricochet
- Black #36 nylon net with 1-3/4" square mesh, 345 lb. break strength
- Available in multiple heights, styles, and layout configurations
- Hinged net stabilizer extension arms permit grounds maintenance
- Optional back-up net systems available upon request

| Item Number         | Product Description   |
|---------------------|---|
| SPC                 | Shot put cage, (4) poles  |
| SPCEA               | Shot put cage with extension arms, (4) poles                    |
| SPCPT               | Portable shot put cage, (4) poles                               |
| DCHS                | High school discus cage, (6) poles                              |
| DCHSEA              | High discus cage with extension arms, (6) poles                 |
| DCHSPT              | High school portable discus cage, (6) poles                     |
| DCHS7               | High school discus cage, (7) poles                              |
| DCHS7EA             | High school discus cage with extension arms, (7) poles          |
| DCHS8               | High school discus cage, (8) poles                              |
| DCHS8EA             | High school discus cage with extension arms, (8) poles          |
| DCHSTEA             | High school tall discus cage with extension arms, (6) poles     |
| DCCOL               | College discus cage, (8) poles                                  |
| DCCOLEA             | College discus cage with extension arms, (8) poles              |
| DCCOLPT             | College portable discus cage, (8) poles                         |
| DCCOLTEA            | College tall discus cage with extension arms, (8) poles         |
| DCWorld AthleticsEA | World Athletics tall discus cage with extension arms, (9) poles |



## Hammer / Discus Cages

### Product Overview

- Premium hammer / discus cages for NCAA & World Athletics competition
- Black super durable powder coated 4" OD steel uprights
- Aluminum swinging gate door with hinged door support post
- Black #84 nylon with 1-3/4 square mesh, 785 lb. break strength
- Standard height, tall, or extra tall models for enhanced safety
- Mitigate ricochet via standard 36" net offset and door cable design
- Single and dual throwing pad configurations available
- Hinged net stabilizer extension arms permit grounds maintenance
- Optional back-up net systems available upon request

| Item Number         | Product Description  |
|---------------------|--|
| DHCCOL              | College hammer / discus cage, 6.15M height for single pad          |
| DHCCOLT             | College tall hammer / discus cage, 8M height for single pad        |
| DDHCCOL             | College hammer / discus cage, 6.15M height for dual pad            |
| DDHCCOLT            | College tall hammer / discus cage, 8M height for dual pad          |
| DDHCCOLXT           | College extra tall hammer / discus cage, 9.54M height for dual pad |
| DHCWorld Athletics  | World Athletics hammer / discus cage, 10M height for single pad    |
| DDHCWorld Athletics | World Athletics hammer / discus cage, 10M height for dual pad      |



## Sprint Hurdles

### Product Overview

- Available in rocker and "L" shaped styles for all levels
- Hurdles meet or exceed specifications of governing athletic organizations
- Durable, lightweight aluminum construction
- Variety of standard powder coat colors offered
- Available with gateboard lettering and logos
- Proudly manufactured in the U.S.A.
- 5-year manufacturer's product warranty

| Item Number | Product Description   |
|-------------|---|
| HRHS        | High school rocker hurdles - 41"                              |
| HRHSA       | High school advanced rocker hurdle - 41"                      |
| HLHS41      | High school "L" shaped, fixed counterweights - 41"            |
| HLCOL41     | College "L" shaped hurdle, free-sliding counterweights - 41"  |
| HLNAT41     | National "L" shaped hurdle, free-sliding counterweights - 41" |
| HLCOL47     | College "L" shaped hurdle, adjustable counterweights - 47"    |
| HLNAT47     | National "L" shaped hurdle, adjustable counterweights - 47"   |



## Hurdle Carts & Vinyl Covers

### Product Overview

- Durable transport carts hold up to 10 hurdles
- All aluminum construction
- Super durable black powder coated finish
- Universal cart designed for both "L" shaped and rocker hurdles
- Optional all-weather vinyl covers available

| Item Number | Product Description   |
|-------------|---|
| HLCRT41     | Transport cart for up to ten 41" "L" shaped hurdles                 |
| HLCRT47     | Transport cart for up to ten 47" "L" shaped hurdles                 |
| HLCRRT      | Universal transport cart for up to ten rocker or "L" shaped hurdles |
| HLCRTAWC41  | Optional all-weather vinyl cover for 41" "L" shaped hurdle cart     |
| HLCRTAWC47  | Optional all-weather vinyl cover for 47" "L" shaped hurdle cart     |
| HLCRTAWC    | Optional universal all-weather vinyl cover for HLCRRT hurdle cart   |



## Multi-Purpose Carts

### Product Overview

- Designed for general purpose equipment transport to and from storage
- Ideal for transporting landing systems, hurdles, and related equipment
- Heavy-duty powder coated aluminum construction with textured planks
- Large 12" pneumatic wheels for ease of transport over any surface
- Choose from three standard sizes: 4' x 8', 5' x 10', or 6' x 12'
- Available in a variety of standard powder coat colors

| Item Number | Product Description             |
|-------------|---------------------------------|
| MC48        | Multi-purpose cart - 4'W x 8'W  |
| MC510       | Multi-purpose cart - 5'W x 10'W |
| MC12        | Multi-purpose cart - 6'W x 12'W |

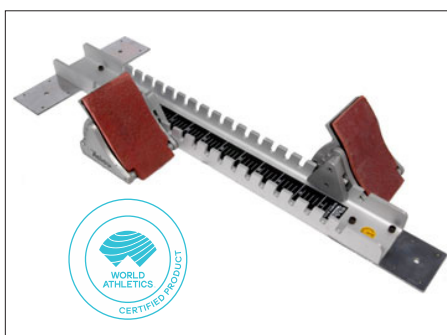


## Rotating Lane Gates

### Product Overview

- Extend the life of your track surface by distributing use
- Designed to reduce wear of the inside running lanes
- Simply lift and rotate position in ninety degree increments
- Super durable powder coated aluminum construction
- Locking models include provision for tamper resistant padlock

| Item Number | Product Description                            |
|-------------|--|
| LGRT        | Rotating track lane gates - set of (4)         |
| LGRTL       | Locking rotating track lane gates - set of (4) |

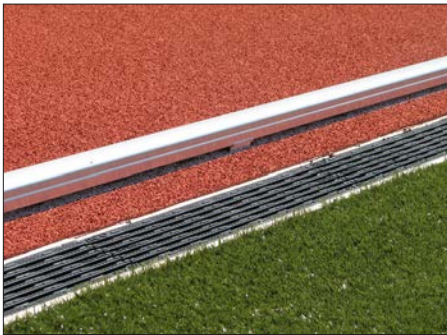


## Starting Blocks

### Product Overview

- Quality starting blocks for all levels of competition
- Aluminum construction with rubber pedal coverings
- Adjustable pedals have four unique angle positions
- Designed to meet NFHS, NCAA, and World Athletics requirements
- Choose between Professional and Elite Scholastic models

| Item Number | Product Description                                  |
|-------------|--|
| N1132PR     | Professional starting block - NCAA / World Athletics |
| N1131OSC    | Elite scholastic starting block - NFHS               |



## Aluminum Track Curbing

### Product Overview

- 2" x 2" aluminum track curbing with rounded corners
- Self-standing design; 20' long interlocking sections
- Form fitted and manufactured to required track layout
- Silver mill, silver anodized, or white powder coated finish
- Elevated 1/2" above surface for unimpeded drainage
- Designed to meet NCAA and World Athletics rules and requirements
- Custom color finishes available upon request

| Item Number | Product Description                            |
|-------------|--|
| TCBM        | Track curbing with silver aluminum mill finish |
| TCBP        | Track curbing with white powder coated finish  |



## Track Crossing Mats

### Product Overview

- Create a protected crossing area for students and staff
- Reduce track wear from repetitive foot traffic and cleats
- Perimeter weighted black geotextile fabric
- Perimeter edge features vinyl encased chain ballast
- Variety of standard sizes and trim color options

| Item Number | Product Description                         |
|-------------|---|
| TCM7530     | Weighted track crossing mat - 7'-6"W x 30'L |
| TCM1530     | Weighted track crossing mat - 15'W x 30'L   |
| TCM7540     | Weighted track crossing mat - 7'-6"W x 40'L |
| TCM1540     | Weighted track crossing mat - 15'W x 40'L   |
| TCM7550     | Weighted track crossing mat - 7'-6"W x 50'L |



## Roll-Out Track Protectors

### Product Overview

- Create a protected crossing area for students and staff
- Reduce track wear from repetitive foot traffic and cleats
- Designed to be rolled and stored when not in use
- Black resilient recycled rubber construction
- Available in a variety of thicknesses, widths and lengths

| Item Number | Product Description   |
|-------------|---|
| RR1236      | Roll-out rubber track protector - 12mm x 36"W x variable length |
| RR1248      | Roll-out rubber track protector - 12mm x 48"W x variable length |
| RR1036      | Roll-out rubber track protector - 10mm x 36"W x variable length |
| RR1048      | Roll-out rubber track protector - 10mm x 48"W x variable length |



## Track Crossing Mats

### Product Overview

- Create a protected crossing area for students and staff
- Reduce track wear from repetitive foot traffic and cleats
- Perimeter weighted black geotextile fabric
- Perimeter edge features vinyl encased chain ballast
- Variety of standard sizes and trim color options

| Item Number | Product Description                         |
|-------------|---|
| TCM7530     | Weighted track crossing mat - 7'-6"W x 30'L |
| TCM1530     | Weighted track crossing mat - 15"W x 30'L   |
| TCM7540     | Weighted track crossing mat - 7'-6"W x 40'L |
| TCM1540     | Weighted track crossing mat - 15"W x 40'L   |
| TCM7550     | Weighted track crossing mat - 7'-6"W x 50'L |



## Roll-Out Track Protectors

### Product Overview

- Create a protected crossing area for students and staff
- Reduce track wear from repetitive foot traffic and cleats
- Designed to be rolled and stored when not in use
- Black resilient recycled rubber construction
- Available in a variety of thicknesses, widths and lengths

| Item Number | Product Description   |
|-------------|---|
| RR1236      | Roll-out rubber track protector - 12mm x 36"W x variable length |
| RR1248      | Roll-out rubber track protector - 12mm x 48"W x variable length |
| RR1036      | Roll-out rubber track protector - 10mm x 36"W x variable length |
| RR1048      | Roll-out rubber track protector - 10mm x 48"W x variable length |











**SPORTSFIELD  
SPECIALTIES**  
[WWW.SPORTSFIELD.COM](http://WWW.SPORTSFIELD.COM)

41155 State Hwy 10. PO Box 231, Delhi, NY 13753  
(888) 975-3343

155 Boyce Dr. Mocksville, NC 27028  
(704) 637-2140