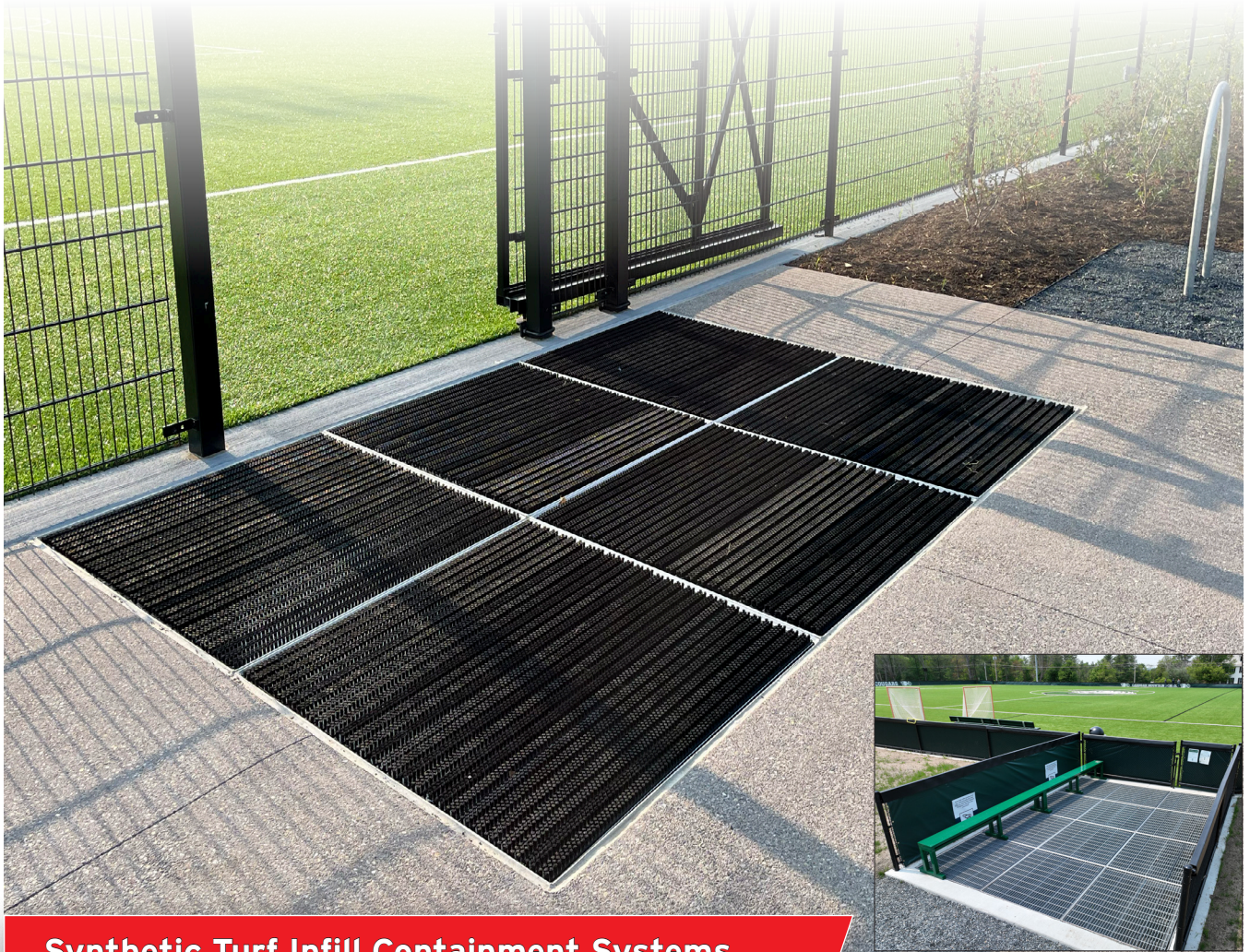


*Excellence from
Design to Installation*



Synthetic Turf Infill Containment Systems



Synthetic Turf Infill Containment Systems

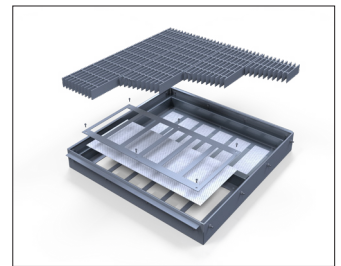
Sportsfield's Pedestrian and Equipment Synthetic Turf Infill Containment Systems are designed to be installed in the access areas of a synthetic turf field to capture the infill and other potential contaminants as people and equipment exit the playing surface. The pedestrian version incorporates brush assemblies designed to take the infill off the players cleats as they walk across them, and the equipment version uses heavy-duty galvanized steel grates that allows maintenance equipment and emergency vehicles to be parked on them while the infill is removed using air or water. The infill is contained within the bottom of the trays and can easily be removed using a vacuum. The trays are modular and can be installed in a variety of configurations to meet the needs of a specific project.

Product Overview

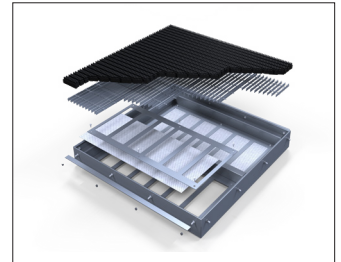
Collection Containment Systems

- Pedestrian and Equipment versions collect migrating infill at synthetic turf field entry/exit points
- Equipment version has (4) heavy duty galvanized steel grates rated for vehicular traffic
- Pedestrian version has (4) galvanized steel grates and black nylon brush assemblies rated for pedestrian traffic
- 1/8" aluminum construction collection enclosure with welded 3" x 2" rectangular tube grate supports
- Open bottom for drainage
- (2) removable and replaceable vinyl mesh filters for infill collection
- (2) removable 1/8" aluminum filter clamping panels
- (2) removable 1/8" aluminum wings for concrete embedment
- Bolted connections for attaching adjacent containment enclosures in desired configuration(s)
- 1/4" diameter stainless steel grate removal tool

Item Number	Product Description
CSITE	Equipment Synthetic Turf Infill Containment System
CSITP	Pedestrian Synthetic Turf Infill Containment System



CSITE



CSITP



CSITB

Barrier Containment Systems

- Prevents infill flyout and migration through chain link fencing
- Vinyl Coated Polyester Mesh (VCP/VCM) with factory enclosed lead line weighted bottom pocket
- Base fabric is 9 x 12 1000 denier polyester
- Weight is 8 oz. per square yard, plus or minus 1 oz.
- 80% closed mesh, 20% open area
- Standard heights available up to 6'
- Heat welded perimeter hem with 30mm PVC coated weldable webbing reinforcement tape
- #2 brass grommets inserted in top and side perimeter hems every 12" on-center and corners for attachment purposes
- Weather, UV, rot, mildew, and flame resistant
- Various standard colors available
- Custom digitally printed lettering and/or logos available upon request

Item Number	Product Description
CSITB	Barrier Synthetic Turf Infill Containment System
CSITBDG	Barrier Synthetic Turf Infill Containment with Digital Graphics



2022 Game Changer Award Winner
(Fields Division)

Equipment



Pedestrian



Combination



Individual Containment Systems can be connected in any configuration with bolted connections; sample configurations shown above for reference.

(4) 45"L x 11-1/4"W Brush Assemblies with 0.022" Diameter x 1/2"H Abrasion Resistant Black Nylon 6.6 Bristles Mounted on HDPE Holders with Heavy Duty 3/16" Aluminum Support Structure

(4) 45"L x 10-13/16"W Heavy Duty Galvanized Steel Grates with 3/4" x 1/8" Thick Bearing Bars, Rated For 316 LBS/SF at Midspan

(2) Removable Filter Clamping Panels

(2) Removable and Replaceable Vinyl Mesh Filters for Infill Collection

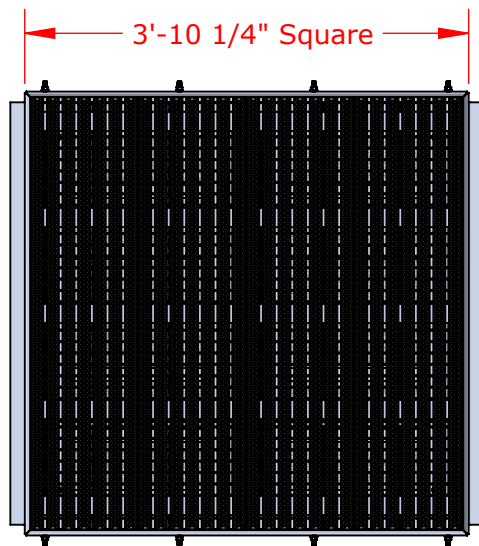
Open Bottom For Drainage

1/8" Aluminum Construction Collection Enclosure with Welded 3" x 2" Aluminum Rectangular Tube Grate Supports

(2) Removable 1/8" Aluminum Wings for Concrete Embedment

Bolted Connections for Attaching Adjacent Containment Enclosures

Individual Containment Systems Can Be Connected In Any Configuration With Bolted Connections, Sample Configuration Below Shown For Reference



Finish Grade Flush with Top of System

5 1/2"

(2) CSITP Pedestrian Containment System

(2) CSITE Equipment Containment Systems

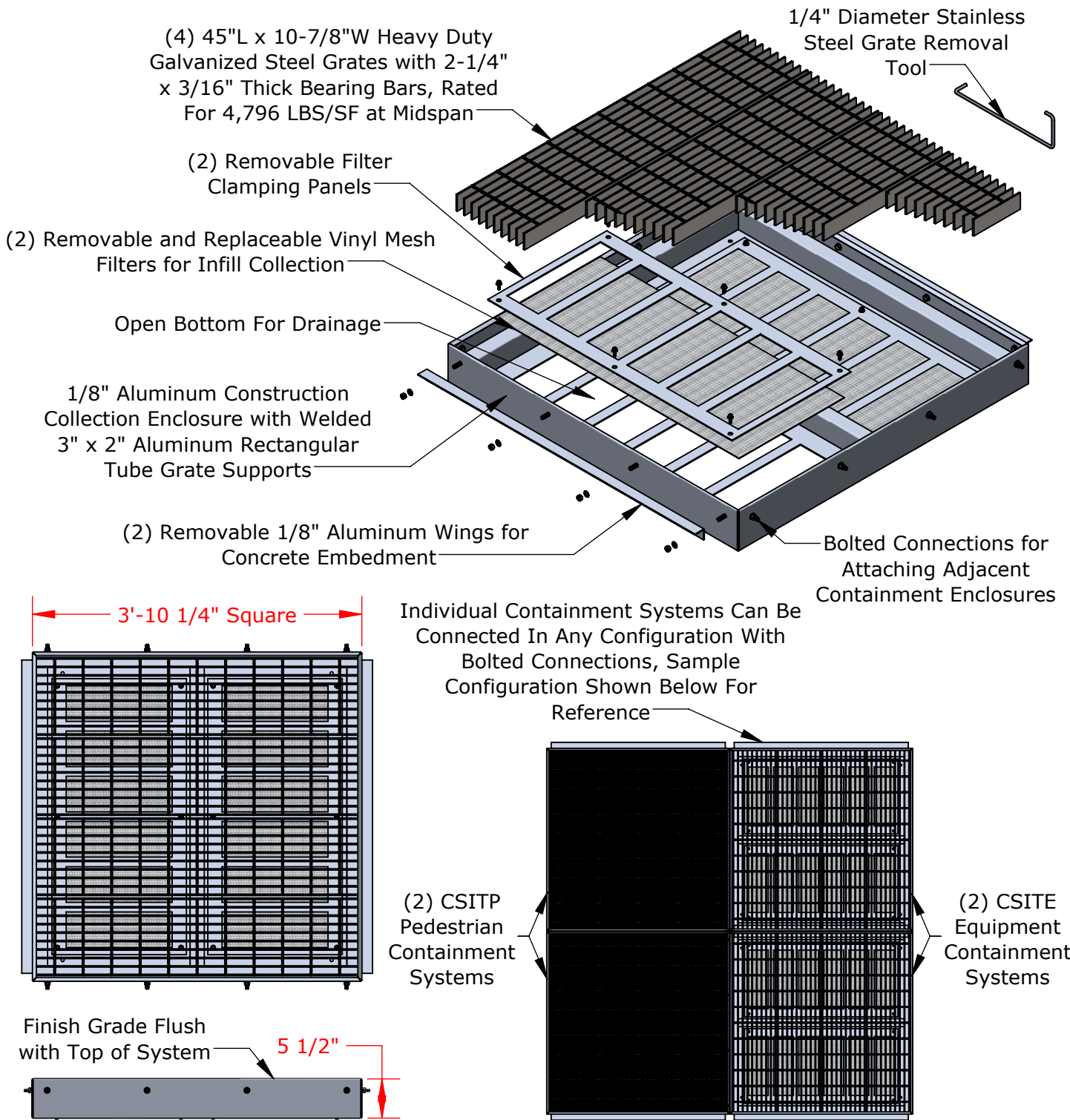
PROPRIETARY AND CONFIDENTIAL

THE INFORMATION CONTAINED IN THIS DRAWING IS THE SOLE PROPERTY OF SPORTSFIELD SPECIALTIES INC. ANY REPRODUCTION IN PART OR AS A WHOLE WITHOUT THE WRITTEN PERMISSION OF SPORTSFIELD SPECIALTIES INC. IS PROHIBITED.

Not To Scale

CSITP Pedestrian Synthetic Turf Infill Containment System

Sportsfield Specialties Inc 07052023



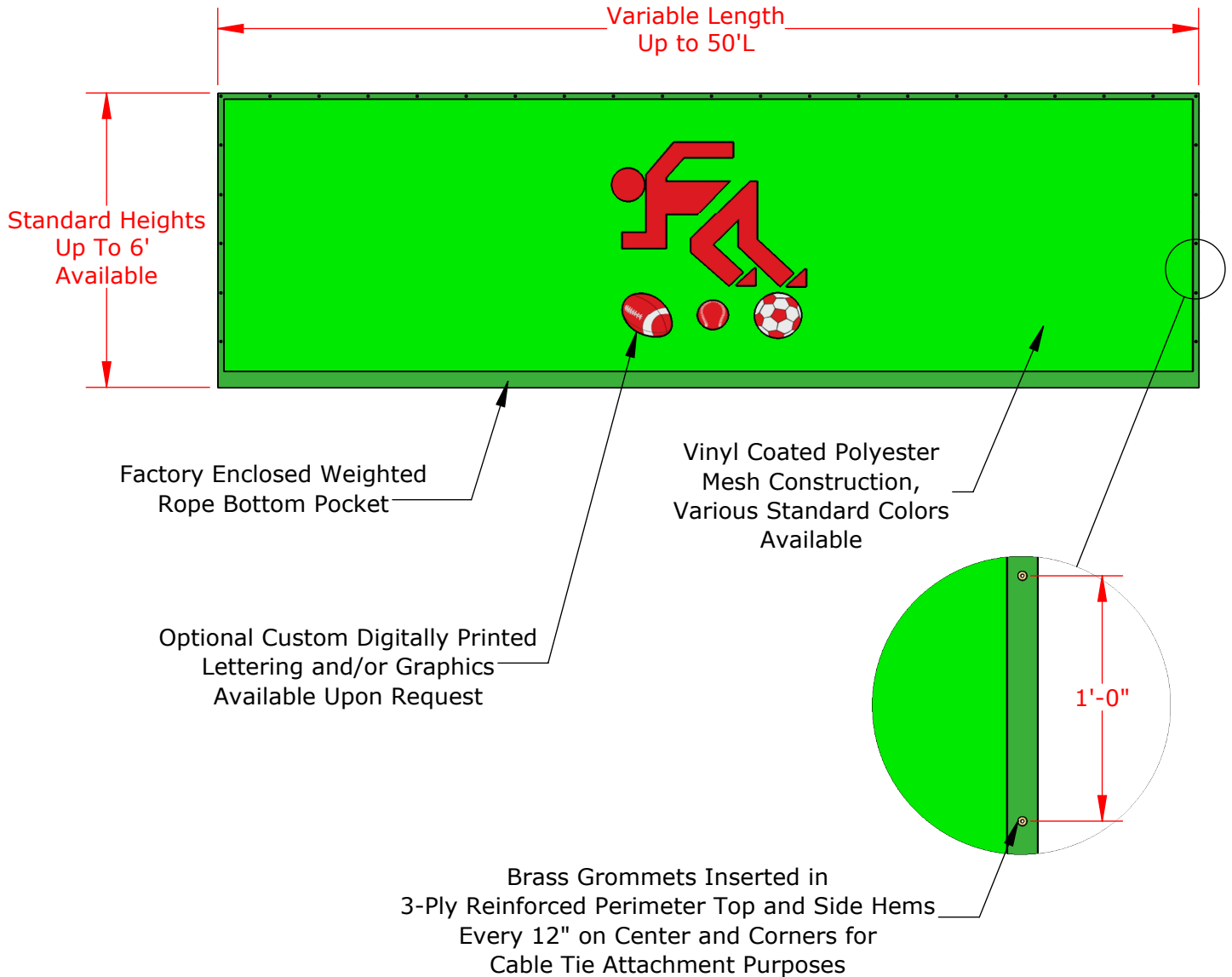
PROPRIETARY AND CONFIDENTIAL

THE INFORMATION CONTAINED IN THIS DRAWING IS THE SOLE PROPERTY OF SPORTSFIELD SPECIALTIES INC. ANY REPRODUCTION IN PART OR AS A WHOLE WITHOUT THE WRITTEN PERMISSION OF SPORTSFIELD SPECIALTIES INC. IS PROHIBITED.

Not To Scale

CSITE Equipment Synthetic Turf Infill Containment System

Sportsfield Specialties Inc 07052023



Note: Failure to Use 50 LB. Break Strength Cable Ties
Will Void the Manufacturer's Product Warranty
(Cable Ties Sold Separately)

Part Number	Description
CSITB	Barrier Synthetic Turf Infill Containment System
CSITBDG	Barrier Synthetic Turf Infill Containment System with Digital Graphics
CT850B	8"L x 50# Break Strength Black Nylon Cable Ties

Final Layout and/or Graphic
Rendering to be Completed
upon Verification of Field
Measurements

PROPRIETARY AND CONFIDENTIAL

THE INFORMATION CONTAINED IN
THIS DRAWING IS THE SOLE PROPERTY
OF SPORTSFIELD SPECIALTIES INC.
ANY REPRODUCTION IN PART OR AS A
WHOLE WITHOUT THE WRITTEN
PERMISSION OF SPORTSFIELD
SPECIALTIES INC. IS PROHIBITED.

CSITB Barrier Synthetic Turf Infill Containment System

Not To Scale

Sportsfield Specialties Inc 08232023