

# 14 oz. INDOOR VINYL COLOR CHART



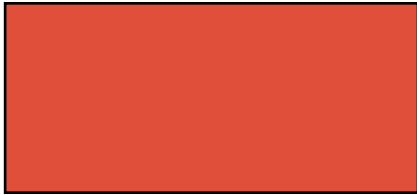
Grey



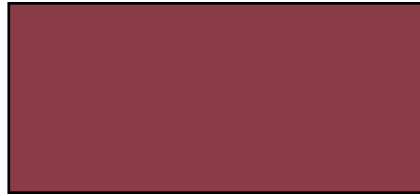
Black



Yellow



Orange



Maroon



Red



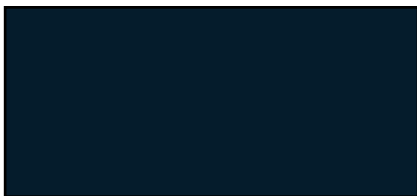
Light Blue



Royal Blue



Blue



Navy Blue



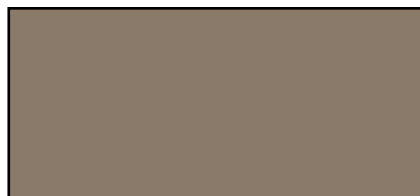
Purple



Kelly Green



Forest Green



Camel

01-01-2024

# PRODUCT SPECIFICATIONS

	Value	Test Method
Weight	14 oz. / yd <sup>2</sup>	ASTM D3776
Construction	9 x 9, 1000 x 1000 Denier	N/A
Grab Tensile (lb / in)	Warp 365 / Fill 348	ASTM D5034
Tongue Tear (lb / in)	Warp 92 / Fill 83	ASTM D2261
Adhesion	28 lbs / 2"	ASTM D751
Cold Crack	-4° F	ASTM D2136
Treatments	Anti-Mildew, UV	N/A
Flame Retardant	Pass	ASTM E84 (Class A), California State (CSFM), NFPA-701

## RECOMMENDED USES

Indoor Wall Pads

Indoor Column Pads

Indoor I-Beam Pads

Dasher Board Pads

Fire Rated Stage Mats

01-01-2024



Color output may not be exact as on this document due to variations in monitors and printers. Color approval must be based on specific colors (vinyl samples, ink samples, digital print samples, etc.) rather than their visual representation in this document. The designs and layouts in this document are the property of Sportsfield Specialties and may not be reproduced without permission and/or written consent.

© 2024 Sportsfield Specialties, Inc. Toll-Free: 888-975-3343

# 18 oz. OUTDOOR VINYL COLOR CHART



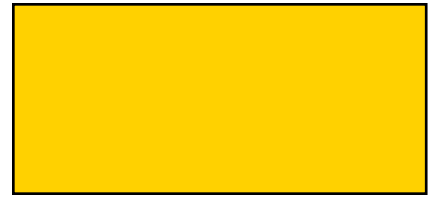
**Grey**

8401 C



**Black**

6 C



**Yellow**

109 C



**Orange**

1655 U



**Burgundy**

208 C



**Red**

186 C



**Aqua**

321 C



**Royal Blue**

661 C



**Blue**

288 C



**Dark Blue**

282 C



**Navy Blue**

289 C



**Purple**

268 C



**Green**

341 C



**Emerald Green**

3302 C



**Forest Green**

627 C

01-01-2024



Color output may not be exact as on this document due to variations in monitors and printers. Color approval must be based on specific colors (vinyl samples, ink samples, digital print samples, etc.) rather than their visual representation in this document. The designs and layouts in this document are the property of Sportsfield Specialties and may not be reproduced without permission and/or written consent.

© 2024 Sportsfield Specialties, Inc. Toll-Free: 888-975-3343

# PRODUCT SPECIFICATIONS

	Value	Test Method
<b>Weight</b>	18 oz. / yd <sup>2</sup>	ASTM D3776
<b>Construction</b>	84% Vinyl Coating, 16% Polyester Fabric	ASTM D751
<b>Grab Tensile (lb / in)</b>	Warp 232 / Fill 213	ASTM D751
<b>Tongue Tear (lb / in)</b>	Warp 93 / Fill 68	ASTM D751
<b>Adhesion (lb / in)</b>	Warp 28 / Fill 40	ASTM D751
<b>Abrasion</b>	> 1000 Cycles	ASTM D3389-94
<b>Cold Crack</b>	-49° F	ASTM D2136
<b>Treatments</b>	Anti-Mildew, UV	N/A
<b>Flame Retardant</b>	None	N/A

## RECOMMENDED USES

BaseZone® Wall Pads

Guard Rail Pads

Chain Link Post / Rail Pads

Goal Post Pads

Light Pole Pads

Scoreboard I-Beam Pads

Netting Post Pads

Fence System Pads

Scorer's Table Pads

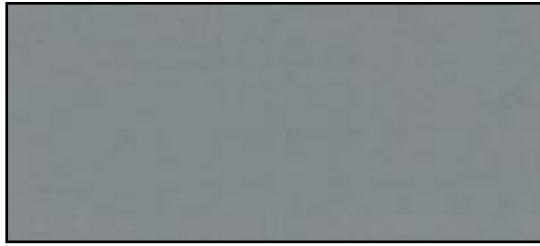
01-01-2024



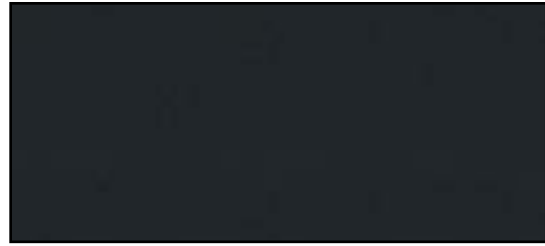
Color output may not be exact as on this document due to variations in monitors and printers. Color approval must be based on specific colors (vinyl samples, ink samples, digital print samples, etc.) rather than their visual representation in this document. The designs and layouts in this document are the property of Sportsfield Specialties and may not be reproduced without permission and/or written consent.

© 2024 Sportsfield Specialties, Inc. Toll-Free: 888-975-3343

# 18.5 oz. GYM FLOOR COVER VINYL COLOR CHART



Grey



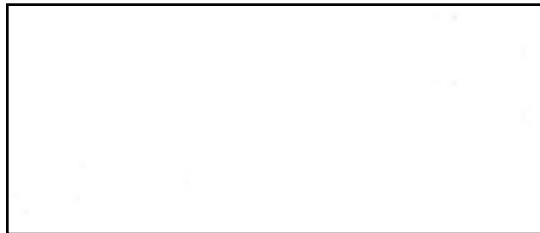
Black



Red



Royal Blue



White



Tan

01-01-2024

# PRODUCT SPECIFICATIONS

	Value	Test Method
<b>Weight</b>	18.5 oz. / yd <sup>2</sup>	ASTM D3776
<b>Construction</b>	20 x 18, 1000 x 1300 Denier	N/A
<b>Grab Tensile (lb / 2")</b>	Warp 629 / Fill 585	ASTM D5034
<b>Tongue Tear (lb / 2")</b>	Warp 79 / Fill 92	ASTM D2261
<b>Adhesion</b>	17 lbs / 1"	ASTM D751
<b>Cold Crack</b>	-30° F	ASTM D2136
<b>Treatments</b>	Anti-Mildew, UV	N/A
<b>Flame Retardant</b>	Self Extinguishing	N/A

## RECOMMENDED USES

Gym Floor Covers

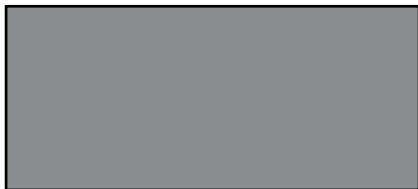
01-01-2024



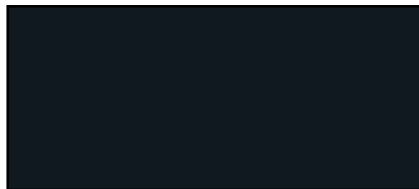
Color output may not be exact as on this document due to variations in monitors and printers. Color approval must be based on specific colors (vinyl samples, ink samples, digital print samples, etc.) rather than their visual representation in this document. The designs and layouts in this document are the property of Sportsfield Specialties and may not be reproduced without permission and/or written consent.

© 2024 Sportsfield Specialties, Inc. Toll-Free: 888-975-3343

# 18.5 oz. OUTDOOR VINYL COLOR CHART



Grey



Black



Yellow



Orange



Burgundy



Red



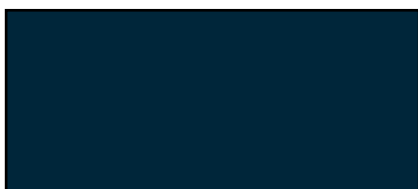
Light Blue



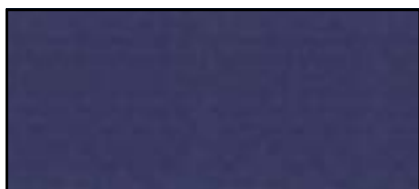
Royal Blue



Blue



Navy Blue



Purple



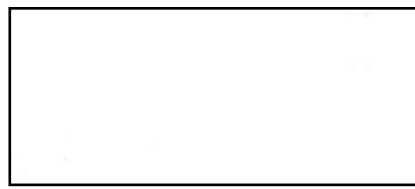
Green



Kelly Green



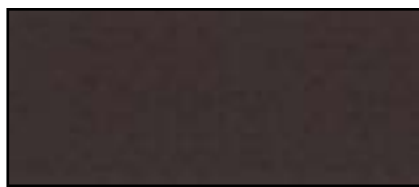
Forest Green



White



Tan



Brown

01/01/2024



Color output may not be exact as on this document due to variations in monitors and printers. Color approval must be based on specific colors (vinyl samples, ink samples, digital print samples, etc.) rather than their visual representation in this document. The designs and layouts in this document are the property of Sportsfield Specialties and may not be reproduced without permission and/or written consent.

© 2024 Sportsfield Specialties, Inc. Toll-Free: 888-975-3343

# PRODUCT SPECIFICATIONS

	Value	Test Method
<b>Weight</b>	18.5 oz. / yd <sup>2</sup>	ASTM D3776
<b>Construction</b>	18 x 17, 1000 x 1300 Denier	N/A
<b>Grab Tensile (lb / in)</b>	Warp 375 / Fill 375	ASTM D5034
<b>Tongue Tear (lb / in)</b>	Warp 100 / Fill 100	ASTM D2261
<b>Adhesion</b>	26 lbs / 2"	ASTM D751
<b>Cold Crack</b>	-30° F	ASTM D2136
<b>Treatments</b>	Anti-Mildew, UV	N/A
<b>Flame Retardant</b>	Self Extinguishing	N/A

## RECOMMENDED USES

High Jump Pits / Covers

Pole Vault Pits / Covers

Track Mats

Chain Pockets

Aerobic Mats

Climbing Mats

Landing / Training Mats

Martial Arts Mats

Sand Pit Covers

Stage Mats

Bleacher Enclosures

01/01/2024



Color output may not be exact as on this document due to variations in monitors and printers. Color approval must be based on specific colors (vinyl samples, ink samples, digital print samples, etc.) rather than their visual representation in this document. The designs and layouts in this document are the property of Sportsfield Specialties and may not be reproduced without permission and/or written consent.

© 2024 Sportsfield Specialties, Inc. Toll-Free: 888-975-3343



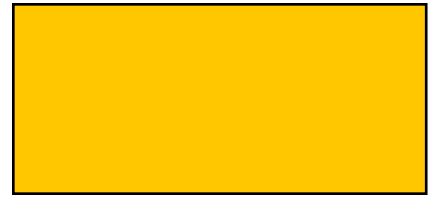
# 19 oz. PREMIUM VINYL COLOR CHART



Grey 8401 C



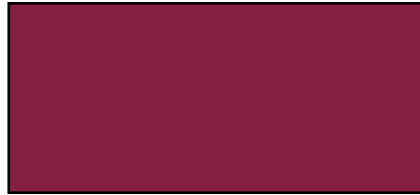
Black 6 C



Yellow 109 U



Orange 1665 C



Burgundy 208 C



Red 186 C



Royal Blue 661 C



Blue 288 C



Navy Blue 289 C



Purple 268 C



Green 341 C



Emerald Green 3302 C



Forest Green 627 C

01-01-2024



Color output may not be exact as on this document due to variations in monitors and printers. Color approval must be based on specific colors (vinyl samples, ink samples, digital print samples, etc.) rather than their visual representation in this document. The designs and layouts in this document are the property of Sportsfield Specialties and may not be reproduced without permission and/or written consent.

© 2024 Sportsfield Specialties, Inc. Toll-Free: 888-975-3343

# PRODUCT SPECIFICATIONS

	Value	Test Method
<b>Weight</b>	19 oz. / yd <sup>2</sup>	ASTM D3776
<b>Construction</b>	18 x 18, 1300 x 1300 Denier	N/A
<b>Grab Tensile (lb / 2")</b>	Warp 750 / Fill 655	ASTM D5034
<b>Tongue Tear (lb / in)</b>	Warp 153 / Fill 135	ASTM D2261
<b>Adhesion</b>	38 lbs / 2"	ASTM D751
<b>Cold Crack</b>	-30° F	ASTM D2136
<b>Treatments</b>	Anti-Mildew, UV	N/A
<b>Flame Retardant</b>	Pass	ASTM E84 (Class A), California State (CSFM), NFPA-701

## RECOMMENDED USES

ProZone® Wall Pads

Demanding Indoor / Outdoor Applications

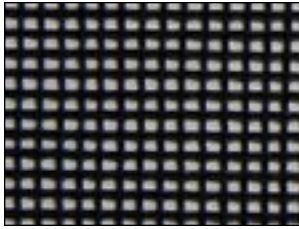
01-01-2024



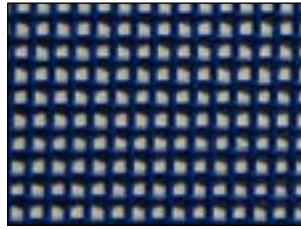
Color output may not be exact as on this document due to variations in monitors and printers. Color approval must be based on specific colors (vinyl samples, ink samples, digital print samples, etc.) rather than their visual representation in this document. The designs and layouts in this document are the property of Sportsfield Specialties and may not be reproduced without permission and/or written consent.

© 2024 Sportsfield Specialties, Inc. Toll-Free: 888-975-3343

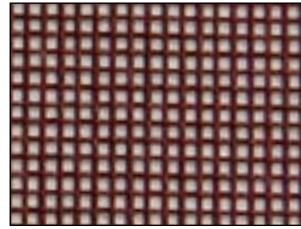
# MESH COLOR CHART



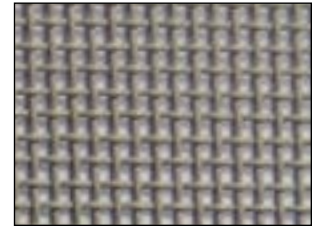
Black



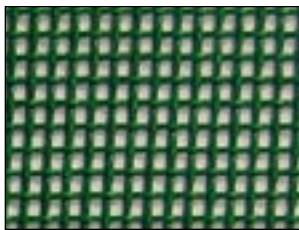
Blue



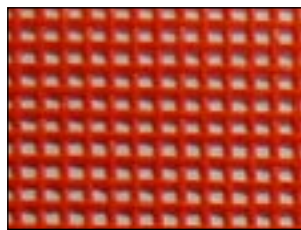
Burgundy



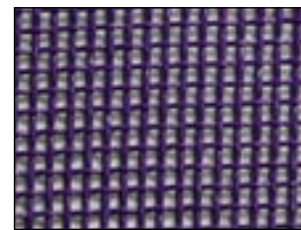
Gray



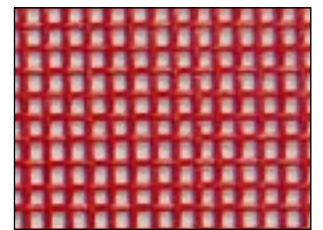
Green



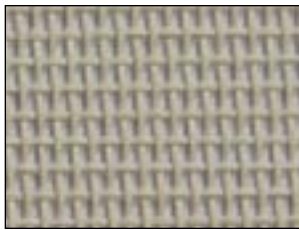
Orange



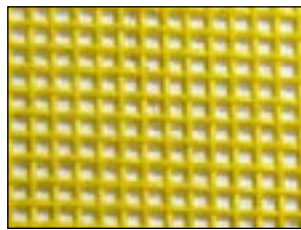
Purple



Red



White



Yellow

01-01-2024

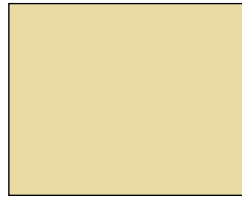
# POWDER COAT COLOR CHART



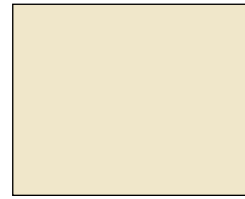
Reflective White



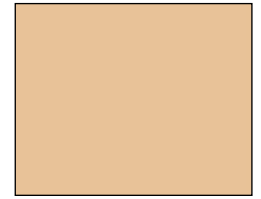
6x Yoke White HP



Uni-Cream



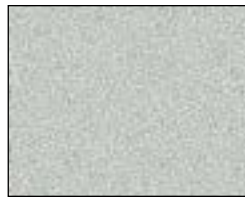
Almond



Camel



ASA-70 Gray



Silvadillo



Azure Blue



Blue Streak II



Post Office Blue II



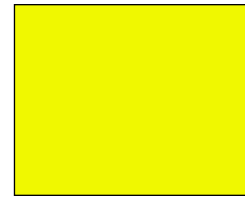
Evergreen



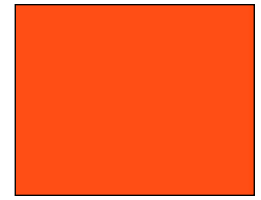
Bike Black (Gloss)



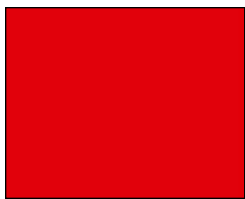
Vulcan Black HP  
(Standard)



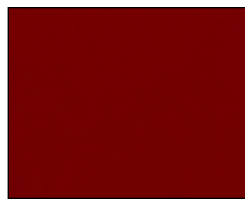
Sulfur Yellow



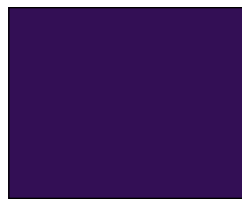
Safety Orange



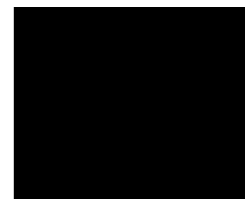
Red Baron



Brown Red



Purple Wave



Goth Black (Flat)

01-01-2024

# POLYBOARD COLOR CHART FOR 8'L AND 15'L TEAM BENCHES



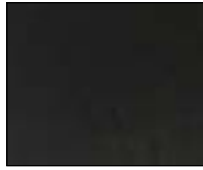
Bright White



Dove Gray



Dark Gray



Black



Turquoise



Dark Green



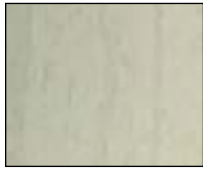
Royal Blue



Purple



Patriot Blue



Ivory



Clay



Light Oak



Weatherwood



Cedar



Dark  
Cherrywood



Bright Red



Dark  
Chocolate



Bubble Gum



Marker Yellow



Orange

## PROFILES



2" X 4"



2" X 6"

## MATERIAL CHARACTERISTICS

PVC-free formula

Fade and flame resistant

Solid core to core

Won't splinter or splinter

Durable, wear resistant

Machinable

Resistant to most chemicals

Manufactured in the U.S.A.



01-01-2024



Color output may not be exact as on this document due to variations in monitors and printers. Color approval must be based on specific colors (vinyl samples, ink samples, digital print samples, etc.) rather than their visual representation in this document. The designs and layouts in this document are the property of Sportsfield Specialties and may not be reproduced without permission and/or written consent.

© 2024 Sportsfield Specialties, Inc. Toll-Free: 888-975-3343

# POLYBOARD COLOR CHART FOR 10'L AND 12'L TEAM BENCHES



Bright White



Dove Gray



Dark Gray



Black



Dark Green



Weatherwood



Cedar



Light Oak

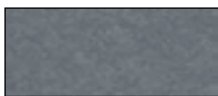


Royal Blue



Dark  
Cherrywood

## PROFILES



2" X 4"



2" X 6"

## MATERIAL CHARACTERISTICS

PVC-free formula

Solid core to core

Durable, wear resistant

Resistant to most chemicals

Fade and flame resistant

Won't splinter or sliver

Machinable

Manufactured in the U.S.A.



01-01-2024



Color output may not be exact as on this document due to variations in monitors and printers. Color approval must be based on specific colors (vinyl samples, ink samples, digital print samples, etc.) rather than their visual representation in this document. The designs and layouts in this document are the property of Sportsfield Specialties and may not be reproduced without permission and/or written consent.

© 2024 Sportsfield Specialties, Inc. Toll-Free: 888-975-3343

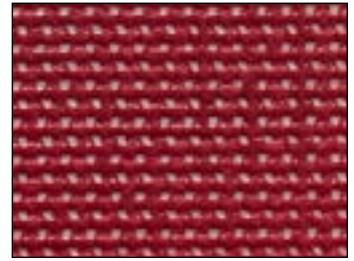
# WINDSCREEN COLOR CHART



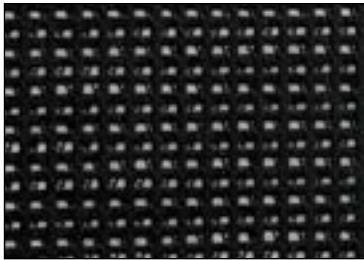
Navy Blue



Royal Blue



Red



Black



Burgundy



Green



Yellow



Purple

01-01-2024

# PRODUCT SPECIFICATIONS

## VINYL COATED MESH 9 x 12

Rot & Tear Resistant • Heat Sealable • Breathable, Lightweight, Flexible  
High Tensile Strength • UV & Mildew Resistant • Weather Resistant • Easy Fabrication  
Abrasion Resistant

### Product Characteristic Chart

Product Properties	Test Method	Results
Base Fabric		9 x 12 1000 D Poly
Weight	5041	8 oz./y <sup>2</sup> ± 1 oz.
Width		57" / 75"
Put Up		200 or 250
Approx. Roll Weight		150-190 lbs / 200-250 lbs
Tensile Strength	5100 (warp x fill)	210 x 220
Adhesion	5970 (warp x fill)	8 x 8 lbs/2 in.
Tear Strength	5134 (warp x fill)	70 x 70 lbs
Mildew Resistance		Resistant
UV Resistance		Resistant
Flame Resistance*		Non-FR

Disclaimer: Above values are average values, as tested in our laboratory. All productions are subject to variations. This information is not intended to be used as strict specifications. All data obtained in our laboratory is considered accurate, however, no warranty is expressed or implied.

\* Available in a FR formula in product-run quantities. Additional charges apply.

01-01-2024

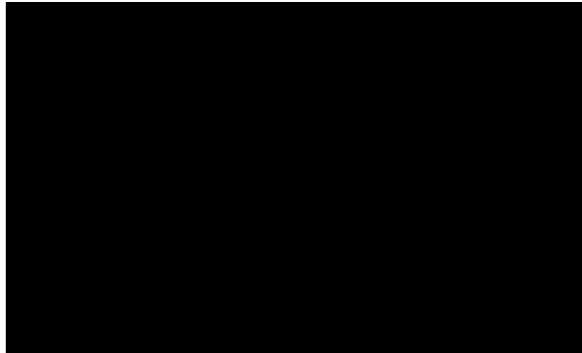


Color output may not be exact as on this document due to variations in monitors and printers. Color approval must be based on specific colors (vinyl samples, ink samples, digital print samples, etc.) rather than their visual representation in this document. The designs and layouts in this document are the property of Sportsfield Specialties and may not be reproduced without permission and/or written consent.

© 2024 Sportsfield Specialties, Inc. Toll-Free: 888-975-3343



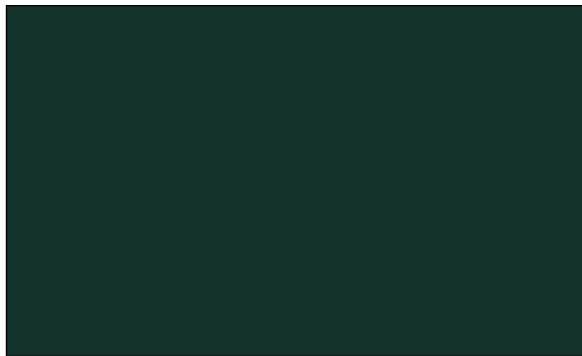
# BATTER'S EYE SOLID VINYL COLOR CHART



Black



Emerald Green



Forest Green



Navy Blue



Royal Blue

01-01-2024

# PRODUCT SPECIFICATIONS

SSIs Batter's Eye Screen is engineered to act as a solid vinyl material for Outfield Batter's Eyes. This 12 oz. laminated vinyl is built with a heavy duty construction designed to withstand outdoor elements. The material is built strong, yet very pliable, making it easier to handle but resistant to tearing. Additionally, this product is 100% opaque and has a matte finish, offering the ideal solid backdrop for batters.

	ENGLISH	METRIC	TESTING METHOD
Weight	12 oz./yd <sup>2</sup>	407 g/m <sup>2</sup>	FS 5040 / ASTM D3776
Widths	up to 126"	up to 320 cm	
Construction	9 x 9/1" by 1000 x 1000	4 x 4/cm by 1100 x 1100	
Grab Tensile	253 x 223 lbs./1"	1125 x 992 N/3 cm	FS 5100 / ASTM D5034
Tongue Tear	74 x 65 lbs./1"	329 x 289 N/3 cm	FS 5134 / ASTM D2261
Adhesion	24 lbs./2"	107 N/5 cm	FS 5970 / ASTM D751
Finish	Matte		
Cold Crack	-30° F	-34° C	FS 5874 / ASTM D2136
Treatments	Anti-Mildew, UV		
Fire Retardant	Self Extinguishing		Pass
Opacity	100%		

\* NOTE: Some wrinkles in the solid vinyl are characteristic of the material and are to be expected.

01-01-2024



Color output may not be exact as on this document due to variations in monitors and printers. Color approval must be based on specific colors (vinyl samples, ink samples, digital print samples, etc.) rather than their visual representation in this document. The designs and layouts in this document are the property of Sportsfield Specialties and may not be reproduced without permission and/or written consent.

© 2024 Sportsfield Specialties, Inc. Toll-Free: 888-975-3343

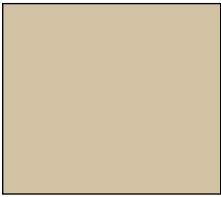
# EXTERIOR METAL SIDING COLOR CHART



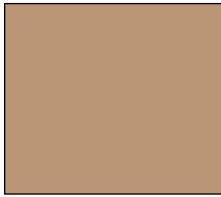
Bright White (39)



White (30)



Light Stone (63)



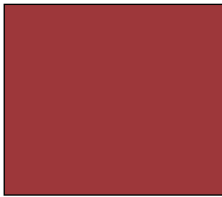
Mocha Tan (22)



Brown (12)



Patriot Red (73)



Red (24)



Dark Red (46)



Hawaiian Blue (70)



Ocean Blue (35)



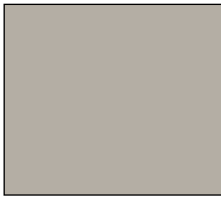
Forest Green (26)



Patina Green (58)



Charcoal (17)



Ash Grey (25)



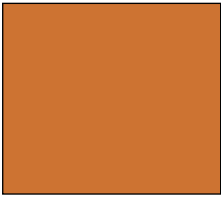
Burnished Slate (49)



Burgundy (15)



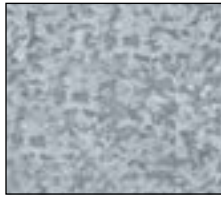
Black (06)



Native Copper (E95)<sup>2</sup>



Galvalume (41)<sup>1</sup>



Galvanized (00)<sup>1</sup>



01-01-2024



Color output may not be exact as on this document due to variations in monitors and printers. Color approval must be based on specific colors (vinyl samples, ink samples, digital print samples, etc.) rather than their visual representation in this document. The designs and layouts in this document are the property of Sportsfield Specialties and may not be reproduced without permission and/or written consent.

© 2024 Sportsfield Specialties, Inc. Toll-Free: 888-975-3343

# EXTERIOR SMARTSIDE<sup>®</sup> LAP SIDING COLOR CHART

## VIVID REFRESH



Light Gray

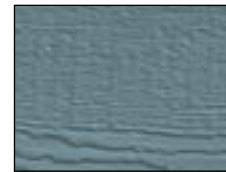


Smoky Ash

## EARTH ELEMENTS



Clay



Mountain Lake



Olive

## TRADITIONAL CHARM



White



Oyster Shell

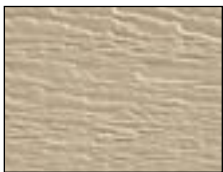


French Gray



Coffee \*

## COASTAL BREEZE



Sand



Seal



Terra Bronze \*



Pelican



\* Indicates Longer Lead Time Item



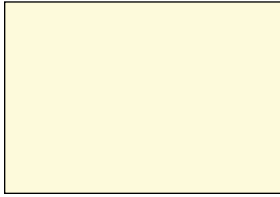
01-01-2024



Color output may not be exact as on this document due to variations in monitors and printers. Color approval must be based on specific colors (vinyl samples, ink samples, digital print samples, etc.) rather than their visual representation in this document. The designs and layouts in this document are the property of Sportsfield Specialties and may not be reproduced without permission and/or written consent.

© 2024 Sportsfield Specialties, Inc. Toll-Free: 888-975-3343

# INTERIOR WALL PAINT COLOR CHART



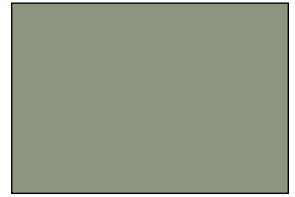
Montgomery White  
HC-33



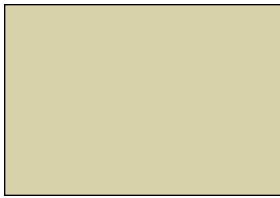
Lancaster Whitewash  
HC-174



Hamilton Blue 36



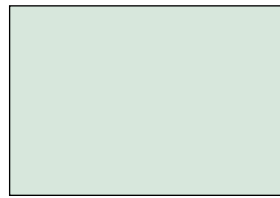
Briarwood 73



Richmond Bisque 54



Revere Pewter  
HC-172



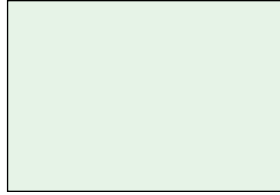
Cliffside Gray 74



Charcoal Slate 86



Platinum Gray 71



Wickham Gray  
HC-171



Annapolis Gray 70

01-01-2024

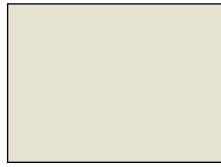
# METAL ROOF COLOR CHART



Bright White (39)



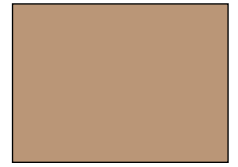
Polar White (80)



White (30)



Light Stone (63)



Mocha Tan (22)



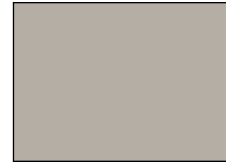
Brown (12)



Burnished Slate (49)



Taupe (74)



Ash Grey (25)



Charcoal (17)



Red (24)



Patriot Red (73)



Dark Red (46)



Burgundy (15)



Hawaiian Blue (70)



Ocean Blue (35)



Patina Green (58)



Forest Green (26)



Black (06)



Native Copper (E95)



Galvanized (00)



Galvalume (41)

**ms metal sales**<sup>™</sup>  
manufacturing corporation

01-01-2024



Color output may not be exact as on this document due to variations in monitors and printers. Color approval must be based on specific colors (vinyl samples, ink samples, digital print samples, etc.) rather than their visual representation in this document. The designs and layouts in this document are the property of Sportsfield Specialties and may not be reproduced without permission and/or written consent.

© 2024 Sportsfield Specialties, Inc. Toll-Free: 888-975-3343