

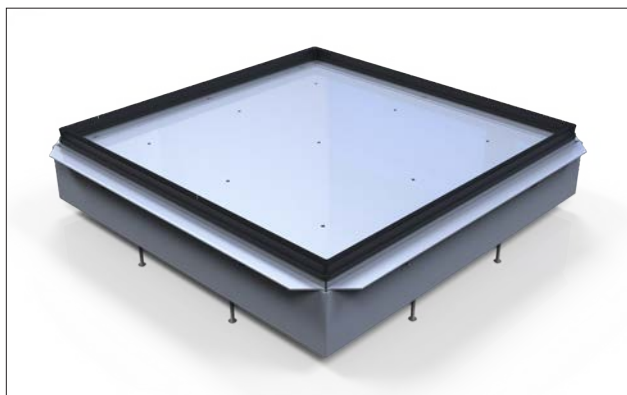
Manhole Access Frame Kits



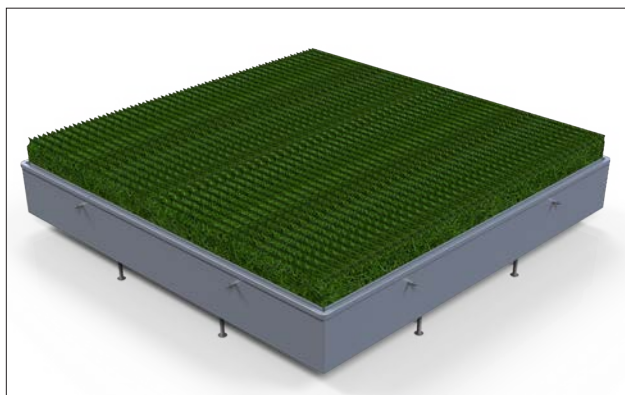
Manhole Access Frame Kits

Product Overview

- Creates a subsurface void to permit access for manhole cover removal
- Designed for synthetic infill turf or natural grass applications
- Synthetic turf models include exclusive infill retainage gasket and perimeter turf attachment ledge
- Heavy duty 11 gauge welded steel construction
- Includes solid cover with factory provided 3/8" diameter perforated drain holes
- Note: Synthetic turf models require turf to be applied by others; natural grass models include factory pre-installed green synthetic turf with thatch layer and black trim strip
- Standard black powder coated finish
- Custom sizes available upon request



MHAFIT40



MHAFNG40

Item Number	Product Description
MHAFIT40	Manhole Access Frame Kit with Infill Retainer System for Synthetic Turf Applications
MHAFNG40	Manhole Access Frame Kit for Natural Grass Application

