



www.sportsfield.com | 888-975-3343

*Excellence from
Design to Installation*



Synthetic Turf Infill Containment Systems



Sportsfield Specialties, Inc. 41155 State Hwy 10. Delhi, NY 13753

Synthetic Turf Infill Containment Systems

Sportsfield's Pedestrian and Equipment Synthetic Turf Infill Containment Systems are designed to be installed in the access areas of a synthetic turf field to capture the infill and other potential contaminants as people and equipment exit the playing surface. The pedestrian version incorporates brush assemblies designed to take the infill off the players cleats as they walk across them, and the equipment version uses heavy-duty galvanized steel grates that allows maintenance equipment and emergency vehicles to be parked on them while the infill is removed using air or water. The infill is contained within the bottom of the trays and can easily be removed using a vacuum. The trays are modular and can be installed in a variety of configurations to meet the needs of a specific project.

Product Overview

Collection Containment Systems

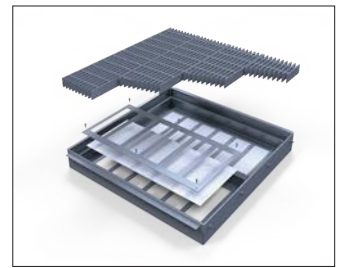
- Pedestrian and Equipment versions collect migrating infill at synthetic turf field entry/exit points
- Equipment version has (4) heavy duty galvanized steel grates rated for vehicular traffic
- Pedestrian version has (4) galvanized steel grates and black nylon brush assemblies rated for pedestrian traffic
- 1/8" aluminum construction collection enclosure with welded 3" x 2" rectangular tube grate supports
- Open bottom for drainage
- (2) removable and replaceable vinyl mesh filters for infill collection
- (2) removable 1/8" aluminum filter clamping panels
- (2) removable 1/8" aluminum wings for concrete embedment
- Bolted connections for attaching adjacent containment enclosures in desired configuration(s)
- 1/4" diameter stainless steel grate removal tool

Item Number	Product Description
CSITE	Equipment Synthetic Turf Infill Containment System
CSITP	Pedestrian Synthetic Turf Infill Containment System

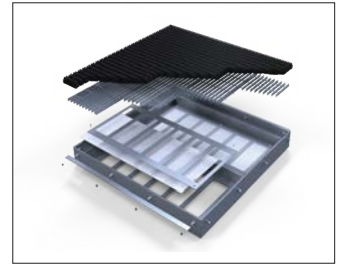
Barrier Containment Systems

- Prevents infill flyout and migration through chain link fencing
- Vinyl Coated Polyester Mesh (VCP/VCM) with factory enclosed lead line weighted bottom pocket
- Base fabric is 9 x 12 1000 denier polyester
- Weight is 8 oz. per square yard, plus or minus 1 oz.
- 80% closed mesh, 20% open area
- Standard heights available up to 6'
- Heat welded perimeter hem with 30mm PVC coated weldable webbing reinforcement tape
- #2 brass grommets inserted in top and side perimeter hems every 12" on-center and corners for attachment purposes
- Weather, UV, rot, mildew, and flame resistant
- Various standard colors available
- Custom digitally printed lettering and/or logos available upon request

Item Number	Product Description
CSITB	Barrier Synthetic Turf Infill Containment System
CSITBDG	Barrier Synthetic Turf Infill Containment with Digital Graphics



CSITE



CSITP



CSITB



2022 Game Changer Award Winner
(Fields Division)

Equipment



Pedestrian



Combination



Individual Containment Systems can be connected in any configuration with bolted connections; sample configurations shown above for reference.