

2023



**SPORTSFIELD
SPECIALTIES**

ONE STOP FOR YOUR SPORTS VENUE NEEDS

**DEALER SALES DIVISION
2023 PRODUCT CATALOG**

www.sportsfield.com | 888-975-3343

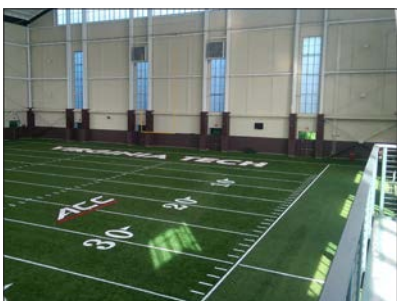


One Stop for All Your Sports Venue Needs

Sportsfield Specialties, Inc. is the leader in the manufacture and sale of athletic field equipment for all levels of play. Founded in 1998, Sportsfield serves thousands of professional stadiums, NCAA venues, high schools, and community centers across North America. Our client-centered service, strategic partnerships, and commitment to manufacturing world-class equipment gives our customers the highest level of confidence that their facilities will look great and function efficiently using Sportsfield equipment!

Sportsfield has been awarded 30+ U.S. Patents for our innovative field equipment designs, several American Sports Builders Association (ASBA) Game Changer Awards, and countless accolades for our role as supplier in award-winning sports venue construction projects.





Catalog Contents

Indoor Padding

Indoor Wall Pads	4
Column Padding	4
Dasher Board Padding	5
I-Beam Padding	5
Climbing Wall Padding	5

Mats & Flooring

Stage Mats	6
Aerobic Mats	6
Martial Arts Mats	6
Landing / Training Mats	7
Weight Room Flooring	7
Pro X Flooring	8
Gym Floor Covers / Racks	8

Barriers & Netting

Wind & Privacy Screen	9
Chain Link Fence Caps	9
#36 Net	10
Batting Tunnels	10
Ultra Cross® Knotless Net	11

Outdoor Padding

Field Wall Padding	12
Guard Rail Pads	14
Chain Link Post & Rail Pads	14
Football Goal Post Pads	15
Light Pole Padding	15
Scoreboard I-Beam Padding	15

Track & Field Pads & Mats

Pole Vault Landing Pad Systems	16
High Jump Landing Pads	17
Track Crossing Mats / Protectors	17



Indoor Wall Padding

Product Overview

- Class A fire rated indoor vinyl and 2" high impact bonded or fire rated foam
- Offered in a wide variety of standard colors and sizes
- Optional high resolution digitally printed graphics / lettering
- All products exceed ASTM F2440-11 impact requirements
- Standard pads rated F2440-11 - Gmax: 123 / HIC: 428
- ProSafe premium pads rated F2440-11 - Gmax: 94 / HIC 286
- ProSafe premium pads fire rated ASTM E-84 - FSI:20 / SDI: 350 (Class A)

Item Number	Product Description
WCHI262	Standard indoor wall pad - 2'W x 6'H, attachment lips
WCHI262DG	Standard indoor wall pad with digital graphics - 2'W x 6'H, attachment lips
WCXFR262	ProSafe premium indoor wall pad - 2'W x 6'H, attachment lips
WCXFR262DG	ProSafe premium indoor wall pad with digital graphics - 2'W x 6'H, attachment lips
WZHI262	Standard indoor wall pad - 2'W x 6'H, z-clip top and attachment lip bottom
WZHI262DG	Standard indoor wall pad with digital graphics - 2'W x 6'H, z-clip top and attachment lip bottom
WZXFR262	ProSafe premium indoor wall pad - 2'W x 6'H, z-clip top and attachment lip bottom
WZXFR262DG	ProSafe premium indoor wall pad with digital graphics - 2'W x 6'H, z-clip top and attachment lip bottom
WZTBHI262	Standard indoor wall pad - 2'W x 6'H, double z-clip
WZTBHI262DG	Standard indoor wall pad with digital graphics - 2'W x 6'H, double z-clip
WZTBXFR262	ProSafe premium indoor wall pad - 2'W x 6'H, double z-clip
WZTBXFR262DG	ProSafe premium indoor wall pad with digital graphics - 2'W x 6'H, double z-clip



Column Padding

Product Overview

- Pre-engineered designs improve safety and appearance
- Factory produced corners eliminate gaps and ensure impact resilience
- Available in two-sided, three-sided, four-sided, and tapered configurations
- Customized to satisfy dimensional requirements of each application
- Offered with the same performance attributes as indoor wall padding
- Optional high resolution digitally printed graphics / lettering

Item Number	Product Description
COPHI	Standard indoor column pad with attachment lips
COPXFR	ProSafe premium indoor column pad with attachment lips
COPZHI	Standard indoor column pad with z-clip and attachment lip
COPZXFR	ProSafe premium indoor column pad with z-clip and attachment lip
COPZTBHI	Standard indoor column pad with double z-clip
COPZTBXFR	ProSafe premium indoor column pad with double z-clip

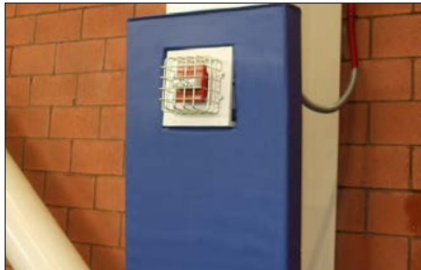


Dasher Board Padding

Product Overview

- “L” shaped pads designed specifically for dasher boards
- Provides protection for the top and face of the board
- Ideal for arena football and ice hockey applications
- Utilize interchangeable digitally printed advertisements
- Pads feature 3” or 5” high impact polyurethane and XPE foam - 8’ wide x 42” to 48” tall
- Secure to self-adhesive Velcro® strips on spectator side of boards
- Used by 50+ arena football stadiums nationwide

Item Number	Product Description
DBPCF3	3” Foam dasher board padding
DBPCF5	5” Foam dasher board padding



I-Beam Padding

Product Overview

- Protect exposed I-Beams commonly found in indoor facilities
- Designed to wrap the face and front edges of the steel beam
- Class A fire rated indoor vinyl and 1-1/4” high impact XPE foam construction
- Secure to self-adhesive Velcro® strips placed on the opposite side
- Custom heights, width, and cutouts available upon request

Item Number	Product Description
IB6HI	6” I-beam pad
IB8HI	8” I-beam pad
IB10HI	10” I-beam pad
IB12HI	12” I-beam pad



Climbing Wall Padding

Product Overview

- Climbing wall pads provide a cushioned landing area and wall protection
- Hinged design secures to the wall to prevent unsupervised climbing
- 4’W x 6’H x 2.25” or custom sizes upon request
- Portable landing zones offered in a variety of sizes pads 4” and 6” thick; 6’x6’, 6’x8’, 6’x12’, or custom sizes upon request

Item Number	Product Description
CWHI46	4’ x 6’ Poly climbing wall pads
CWHI46FR	4’ x 6’ Fire retardant climbing wall pad
CW-CUSTOM	Custom size climbing wall pads
LZM66	6’ x 6’ Landing zone pads
LZM68	6’ x 8’ Landing zone pads
LZM612	6’ x 12’ Landing zone pads



Stage Mats

Product Overview

- "L" shaped pads designed specifically for stage applications
- 90 degree folding design permits easy storage access
- Secures with Velcro® for ease of installation and removal
- Constructed with 1-1/4" or 2" high density foam

Item Number	Product Description
SMVHI	1-1/4" high density foam stage mats



Aerobic Mats

Product Overview

- Used for aerobics and day care resting mats
- Constructed from 18.5 oz. heavy coated vinyl
- Available with 1" or 2" high impact foam

Item Number	Product Description
AM124	2' x 4' x 1" high impact foam aerobic mat
AM226	2' x 6' x 2" high impact foam aerobic mat



Martial Arts Mats

Product Overview

- 18.5 oz heavy coated vinyl covered foam
- Hook and loop fasteners on four sides allows user to attach multiple mats
- Single or double layer cross-linked polyethylene foam core
- 10' x 10' single fold sections

Item Number	Product Description
MATER1	10' x 10' x 1'-1/4" single fold
MATER2	10' x 10' x 2-1/2" single fold

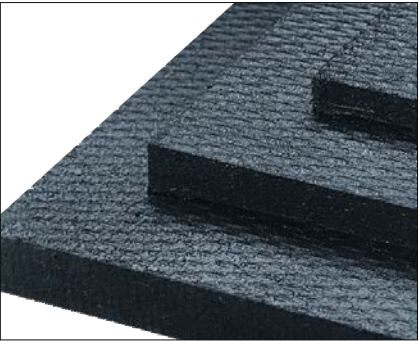


Landing / Training Mat

Product Overview

- 18.5 oz vinyl, breather fabric, nylon handles
- Available in a variety of sizes and thicknesses

Item Number	Product Description
NFLT848	4'W x 8'L x 8" landing mat
NFLT8510	5' x 10' x 8" landing mat
NFLT8612	6' x 12' x 8" landing mat
NFLT1048	4' x 8' x 10" landing mat
NFLT10510	5' x 10' x 10" landing mat
NFLT10612	6' x 12' x 10" landing mat
NFLT1248	4' x 8' x 12" landing mat
NFLT12510	5' x 10' x 12" landing mat
NFLT12612	6' x 12' x 12" landing mat



Weight Room Flooring

Product Overview

- Available in a variety of colors and thicknesses
- Durable, comfortable, and slip resistant construction
- Sheets, rolls, and interlocking styles offered

Item Number	Product Description
WSH38B	4' x 6' x 3/8" Sheet - Black
WSH12B	4' x 6' x 1/2" Sheet - Black
WSH34B	4' x 6' x 3/4" Sheet - Black
WSH12C	4' x 6' x 1/2" Sheet - Black with colored speckle



Pro X Flooring

Product Overview

- Low pile plush carpet is laminated to cross-linked polyethylene foam
- Pro X roll out cheer leader mats / flooring - 6' x 42' rolls
- 1.4" and 2" thicknesses available
- Offered in royal blue, navy blue, red, purple, and light gray

Item Number	Product Description
PXFR14	1.4" x 6"W x 42'L Roll
PXFR2	2" x 6"W x 42'L Roll
PXFRV2/4	2" or 4" Velcro seam tape



Gym Floor Cover / Rack

Product Overview

- Covers available in 10' wide sections at any desired length
- Racks provide convenient storage for floor covering
- Low center of gravity rack design provides stability when transporting up to 3000 lbs

Item Number	Product Description
GFC	Floor cover; 10"W x required length
GFCR	Gym floor cover rack - manual rollers
GFCRPW	Gym floor cover rack - power winder

Follow Us on Social Media





Wind & Privacy Screen

Product Overview

- Wind and privacy screening for outdoor athletic venues.
- High resolution digitally printed graphics and lettering
- Ideal for advertising, aesthetic enhancement, and school spirit
- Available in 6', 9', and 12' heights with variable lengths (50' max.)
- Heat welded, webbing reinforced perimeter hem with grommets
- Vinyl coated polyester mesh construction available in a variety of standard colors
- Half-moon air vent cutouts every 12' for 9'H+

Item Number	Product Description
VCP6	Vinyl-coated polyester windscreen, 6'H
VCP6DG	Vinyl-coated polyester windscreen, 6'H with custom digital graphics
VCP9	Vinyl-coated polyester windscreen, 9'H
VCP9DG	Vinyl-coated polyester windscreen, 9'H with custom digital graphics

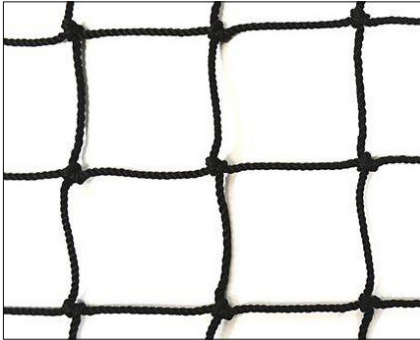


Fence Caps

Product Overview

- Designed to protect chain link fence top rails
- Weather and UV resistant caps available in a variety of colors
- Cable ties sold separately

Item Number	Product Description
FGL	Fence Guard Lite - Teardrop, 80' / box
FGS	Fence Guard Standard - Teardrop, 80' / box
FGP	Fence Guard Premium - Teardrop, 80' / box
STC	Safety top cap - squared, 40' / box
PC100	Poly cap - corrugated round, 100' roll
PC250	Poly cap - corrugated round, 250' roll



Batting Tunnel Nets

Product Overview

- Twisted and knotted black nylon net
- 1-3/4" square mesh
- Durable netting provides added safety on the playing field

Item Number	Product Description
BSSN36	#36 gauge, twisted and knotted black, nylon net. 1-3/4" square mesh



Batting Tunnel Nets

Product Overview

- Black #36 nylon 1-3/4" netting with 345 lb break strength
- Includes two full height overlapping entry flaps
- Weighted bottom featuring vinyl enclosed 1/4" chain
- Available with or without integral soft toss hitting stations
- Custom height, length, and width available upon request
- #60 and #84 nylon netting available upon request

Item Number	Product Description
BTNB	Baseball batting tunnel net - 13'H x 14'W x 75'L
BTNBST	Baseball batting tunnel net with four (4) soft toss hitting stations
BTNS	Softball batting tunnel net – 13'H x 14'W x 55'L
BTNSST	Softball batting tunnel net with three (3) soft toss hitting stations

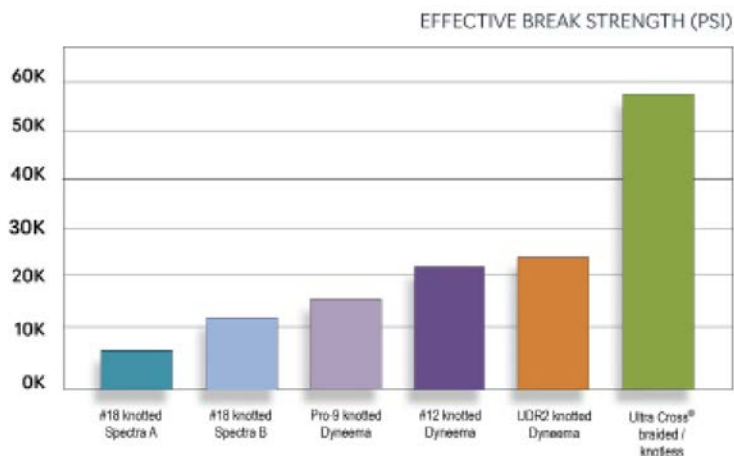
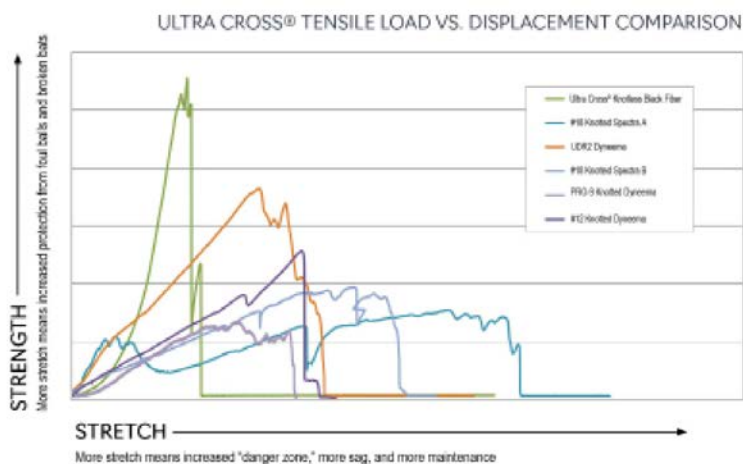
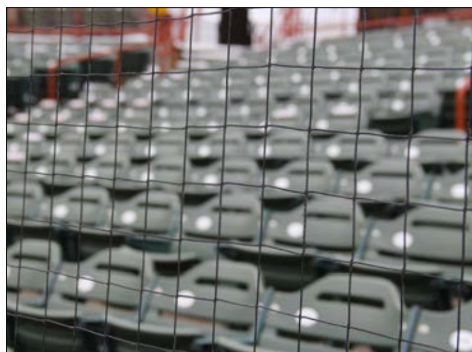
About Ultra Cross® Netting

Product Overview

- Sportsfield is the exclusive provider of Ultra Cross® baseball netting
- Manufactured with UHMWPE Dyneema®, considered "The World's Strongest Fiber"
- Knotless, low-profile design gives spectators industry-leading 95% see-through visibility
- Specifically designed to deliver superior strength and performance over conventional netting
- Unique intersection eliminates 30-60% strength loss experienced by knotted synthetic fibers
- Four-strand braided twine is proven to be stronger than two-strand twisted alternatives
- Improved dimensional stability relative to knots that will tighten and distort over time
- Lightweight with 95% open-area results in less wind load and stress on the system
- Performance characteristics are backed by 3rd party testing and certification



Item Number	Product Description
BSSNUC	4-ply Ultra Cross® knotless, braided, Dyneema® netting. 1-3/4" square mesh



About ZONE Outdoor padding

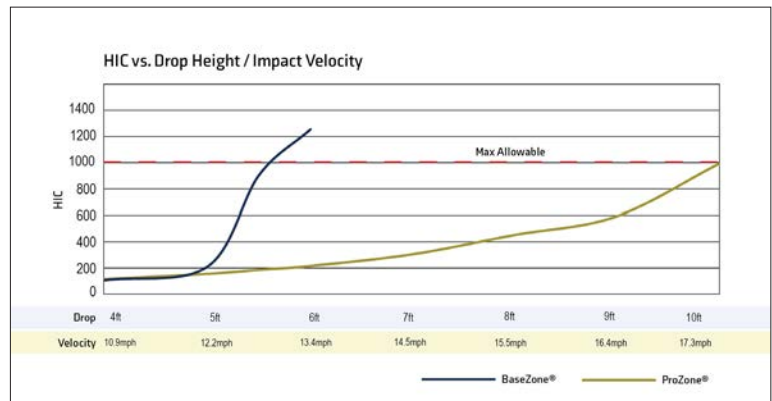


Head Injury Criterion (HIC) & Gmax Testing

Safety is our first concern. That's why Sportsfield Specialties invests in rigorous testing to guarantee our products excel at safety. Our Zone Stadium Wall Pads make the grade by offering excellent player protection on the field—Certified by 3rd party testing agencies!

HIC vs. Drop Height / Impact Velocity

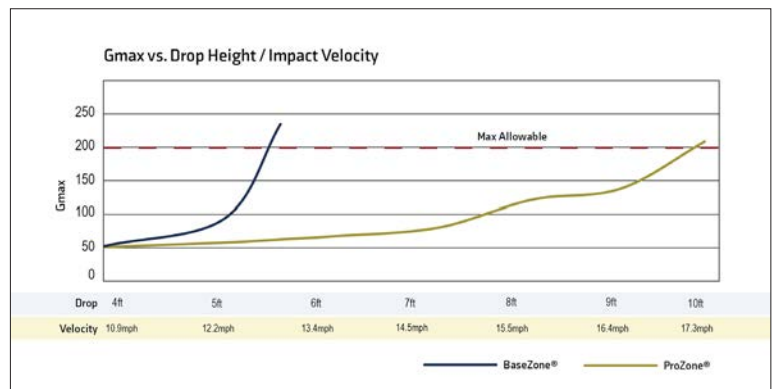
Head Injury Criterion (HIC) is the internationally recognized measurement for the likelihood of head injury.



Gmax vs. Drop Height / Impact Velocity

Gmax refers to how much force our wall pads absorb and in return, how much is returned to the athlete.

ProZone® safely absorbs impact velocities up to 37% higher than BaseZone®





ProZone® Field Wall Padding

Product Overview

- Premium offering featuring unparalleled impact safety performance
- The preferred choice for college and professional applications
- Engineered 3" high performance HDPU foam design
- Premium UV resistant exterior vinyl covering
- 3/4" moisture resistant composite board
- Choose from a variety of standard color options
- Custom digital graphics / lettering available upon request
- Available with z-clip wall attachment or chain-link attachment
- 3-year manufacturer's limited product warranty

Item Number	Product Description
PFWPCL44	ProZone® Field Wall Padding, 4'W x 4'L x 3.75"D, chain link attachment
PFWPZ44	ProZone® Field Wall Padding, 4'W x 4'L x 3.75"D, z-clip wall mounting
PFWPCL46	ProZone® Field Wall Padding, 4'W x 6'L x 3.75"D, chain link attachment
PFWPZ46	ProZone® Field Wall Padding, 4'W x 6'L x 3.75"D, z-clip wall mounting
PFWPCL48	ProZone® Field Wall Padding, 4'W x 8'L x 3.75"D, chain link attachment
PFWPZ48	ProZone® Field Wall Padding, 4'W x 8'L x 3.75"D, z-clip wall mounting



BaseZone® Field Wall Padding

Product Overview

- Popular and affordable option that remains the best in its class
- The preferred choice for high school and little league applications
- 3" 1580 polyurethane foam excels at moderate impact velocities
- 18oz. UV resistant exterior vinyl covering
- 3/4" moisture resistant composite board
- Choose from a variety of standard color options
- Custom digital graphics / lettering available upon request
- Available with z-clip wall attachment or chain-link attachment

Item Number	Product Description
BFWPCL44	BaseZone® Field Wall Padding, 4'W x 4'L x 3.75"D, chain link attachment
BFWPZ44	BaseZone® Field Wall Padding, 4'W x 4'L x 3.75"D, z-clip wall mounting
BFWPCL46	BaseZone® Field Wall Padding, 4'W x 6'L x 3.75"D, chain link attachment
BFWPZ46	BaseZone® Field Wall Padding, 4'W x 6'L x 3.75"D, z-clip wall mounting
BFWPCL48	BaseZone® Field Wall Padding, 4'W x 8'L x 3.75"D, chain link attachment
BFWPZ48	BaseZone® Field Wall Padding, 4'W x 8'L x 3.75"D, z-clip wall mounting

Squared Guard Rail Padding



Product Overview

- The preferred choice for aesthetics and branding
- Available with high resolution digitally printed graphics
- 18 oz. UV resistant exterior vinyl covering
- 1-1/4" high impact XPE foam
- 3/4" moisture resistant composite board
- Engineered rail attachment bracketry and hardware
- Choose from a variety of standard color options
- Fully sewn and grommited models available upon request

Item Number	Product Description
BSGRP	Squared guard rail padding
BSGRPDG	Squared guard rail padding with digital graphics
BFGRP	Flat guard rail padding
BFGRPDG	Flat guard rail padding with digital graphics



Round Guard Rail Padding

Product Overview

- 18 oz. exterior vinyl covering
- Choose from a variety of standard color options
- 1" high density polyurethane foam
- 1.5" vinyl flaps with stainless steel grommets
- Attached to railing with 8" cable ties

Item Number	Product Description
BGRPSG	Round guard rail padding
GRPSG	Economy round guard rail padding



Chain Link Post & Rail Padding

Product Overview

- Provides safety to athletes and visibility for spectators
- Commonly used for bullpen areas and outfield fencing
- 18 oz. UV resistant exterior vinyl covering
- 3" 1580 polyurethane foam
- 1.5" vinyl flaps with stainless steel grommets
- Attached to fence with 14" cable ties

Item Number	Product Description
BCLTRPSG	Top rail pad, 9" face
BCLPPSG	Horizontal and vertical post pad, 6" face



Football Goal Post Pads

Item Number	Product Description
GPPR	Round football goal post pad
GPPRDG	Round football goal post pad with digitally printed graphics
GPPH	Hexagonal football goal post pad
GPPHDG	Hexagonal football goal post pad with digitally printed graphics
GPPS	Square football goal post pad
GPPSDG	Square football goal post pad with digitally printed graphics



Light Pole Padding

Item Number	Product Description
LPP10	Light pole padding, 10.75"OD pole
LPP12	Light pole padding, 12.75"OD pole
LPP14	Light pole padding, 14"OD pole
LPP16	Light pole padding, 16"OD pole
LPP18	Light pole padding, 18"OD pole
LPP20	Light pole padding, 20"OD pole



Scoreboard I-Beam Padding

Product Overview

- Square design x 6' height
- Premium fully encased construction
- 2" high density foam and outdoor vinyl
- Custom digital graphics available upon request
- Variety of standard colors available

Item Number	Product Description
SBP4	Scoreboard I-beam padding, 4" max inside dimension
SBP6	Scoreboard I-beam padding, 6" max inside dimension
SBP8	Scoreboard I-beam padding, 8" max inside dimension
SBP10	Scoreboard I-beam padding, 10" max inside dimension
SBP12	Scoreboard I-beam padding, 12" max inside dimension
SBP14	Scoreboard I-beam padding, 14" max inside dimension
SBP16	Scoreboard I-beam padding, 16" max inside dimension
SBP18	Scoreboard I-beam padding, 18" max inside dimension
SBP20	Scoreboard I-beam padding, 20" max inside dimension

Track & Field Pads / Mats



Pole Vault Landing Pad Systems

Product Overview

- Premium landing pad systems meet or exceed NFHS, NCAA, and World Athletics standards
- Available with patented DuraZone® integrated closed-cell drainage platform
- DuraZone® prevents water absorption and extends life of the pad
- Includes 2" top pad, vault box safety collar, and 8'x10' coach's box
- Heavy coated vinyl and tear / UV resistant vinyl coated mesh
- Honeycomb polyurethane foam; 8" Velcro® reinforcement between base units
- 10 year warranty on 2" nylon handles, stainless steel hardware, and seams
- All-weather covers, base protector pads, standards and crossbars sold separately
- Available with high resolution digital graphics and lettering
- U.S. Patent #7,753,826

Item Number	Product Description
PV2021H	JumpZONE® 19'-9" x 20'-2" x 28" - NFHS
PV2021HDZ	Durazone® 19'-9" x 20'-2" x 28" - NFHS
PV2224L	JumpZONE® 21'-6" x 23'-6" x 28" NFHS / NCAA
PV2224LDZ	Durazone® 21'-6" x 23'-6" x 28" NFHS / NCAA
PV2224H	JumpZONE® 21'-6" x 24' x 32" NFHS / NCAA
PV2224HDZ	Durazone® 21'-6" x 24' x 32" NFHS / NCAA
PV2227H	JumpZONE® 21'-6" x 27' x 32" NFHS / NCAA / World Athletics
PV2227HDZ	Durazone® 21'-6" x 27' x 32" NFHS / NCAA / World Athletics
PV2230H	JumpZONE® 21'-6" x 30' x 32" NFHS / NCAA / World Athletics
PV2230HDZ	Durazone® 21'-6" x 30' x 32" NFHS / NCAA / World Athletics





High Jump Landing Pads

Product Overview

- Premium landing systems meet or exceed NFHS, NCAA, and World Athletics standards
- Available with patented DuraZone® integrated closed-cell drainage platform
- DuraZone® prevents water absorption and extends life of the pad
- Heavy coated vinyl and tear / UV resistant vinyl coated mesh
- Honeycomb polyurethane foam; 8" Velcro® reinforcement between base units
- 10 year warranty on 2" nylon handles, stainless steel hardware, and seams
- All-weather covers, base protector pads, standards and crossbars sold separately
- Available with high resolution digital graphics
- U.S. Patent #7,753,826

Item Number	Product Description
HJ168	JumpZone® high jump landing pad system - 16'-6" x 8' x 26" - NFHS
HJ168DZ	DuraZone® high jump landing pad system - 16'-6" x 8' x 26" - NFHS
HJ168AWC	All-weather cover for high jump landing pad system - 16'-6" x 8' x 26" - NFHS
HJ1610	JumpZone® high jump landing pad system - 16'-6" x 10' x 28" - NFHS / NCAA
HJ1610DZ	DuraZone® high jump landing pad system - 16'-6" x 10' x 28" - NFHS / NCAA
HJ1610AWC	All-weather cover for high jump landing pad system - 16'-6" x 10' x 28" - NFHS / NCAA
HJ1810	JumpZone® high jump landing pad system - 18' x 10' x 28" - NFHS / NCAA
HJ1810DZ	DuraZone® high jump landing pad system - 18' x 10' x 28" - NFHS / NCAA
HJ1810AWC	All-weather cover for high jump landing pad system - 18' x 10' x 28" - NFHS / NCAA
HJ2014	JumpZone® high jump landing pad system - 20' x 13'-2" x 28" - NFHS / NCAA / IAAF
HJ2014DZ	DuraZone® high jump landing pad system - 20' x 13'-2" x 28" - NFHS / NCAA / IAAF
HJ2014AWC	All-weather cover for high jump landing pad system - 20' x 13'-2" x 28" - NFHS / NCAA / IAAF
HJ2414	JumpZone® high jump landing pad system - 24'-6" x 13'-2" x 28" - NFHS / NCAA / IAAF
HJ2414DZ	DuraZone® high jump landing pad system - 24'-6" x 13'-2" x 28" - NFHS / NCAA / IAAF
HJ2414AWC	All-weather cover for high jump landing pad system - 24'-6" x 13'-2" x 28" - NFHS / NCAA / IAAF



Item Number	Product Description
TCM7530	Weighted track crossing mat - 7'-6"W x 30'L
TCM1530	Weighted track crossing mat - 15'W x 30'L
TCM7540	Weighted track crossing mat - 7'-6"W x 40'L
TCM1540	Weighted track crossing mat - 15'W x 40'L
TCM7550	Weighted track crossing mat - 7'-6"W x 50'L



Item Number	Product Description
RR1236	Roll-out rubber track protector - 12mm x 36"W x variable length
RR1248	Roll-out rubber track protector - 12mm x 48"W x variable length
RR1036	Roll-out rubber track protector - 10mm x 36"W x variable length
RR1048	Roll-out rubber track protector - 10mm x 48"W x variable length

Notes

This image shows a single sheet of white paper with horizontal ruling lines. The lines are evenly spaced and run across the width of the page. There are no margins, text, or other markings on the paper.



**SPORTSFIELD
SPECIALTIES**
WWW.SPORTSFIELD.COM

41155 State Hwy 10. PO Box 231, Delhi, NY 13753
(888) 975-3343

155 Boyce Dr. Mocksville, NC 27028
(704) 637-2140